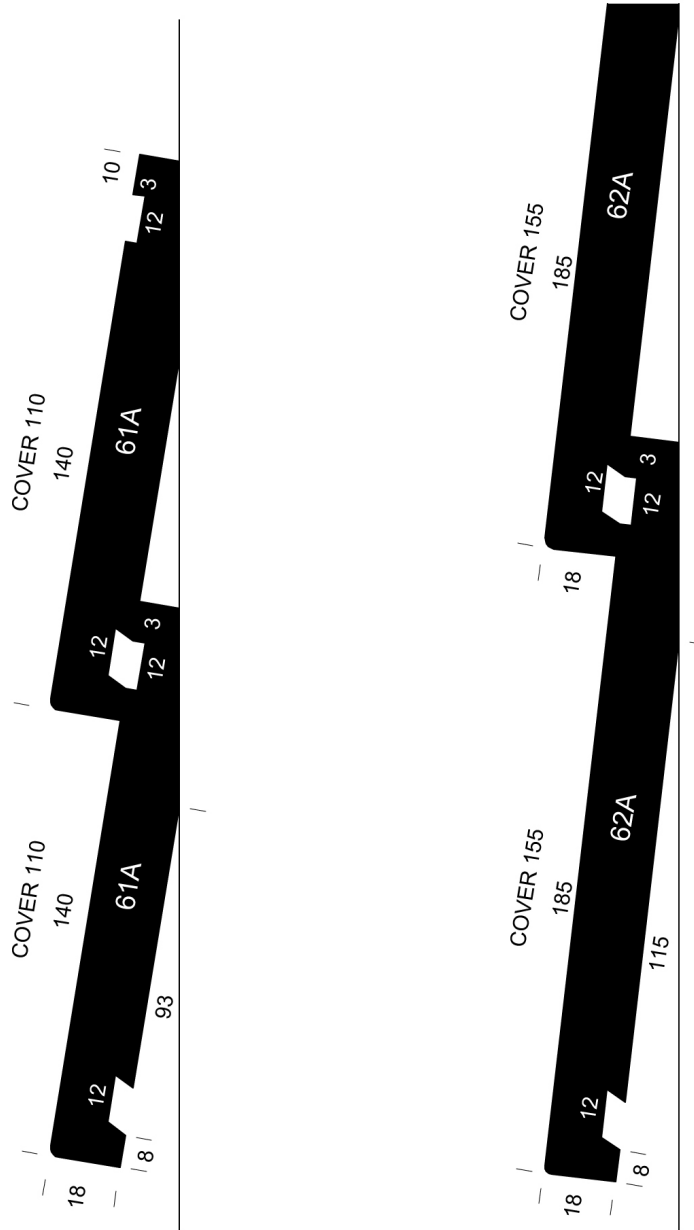


# SMARTCLAD™

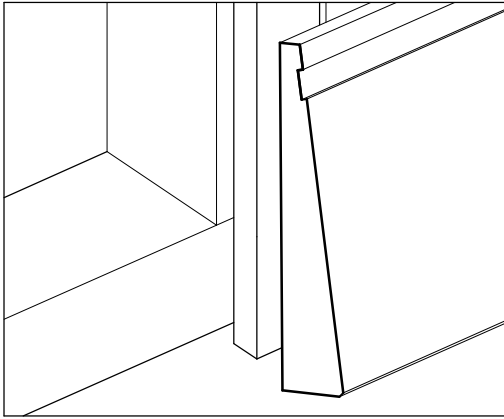
Only our timber weatherboards have the intelligent hidden fixing system



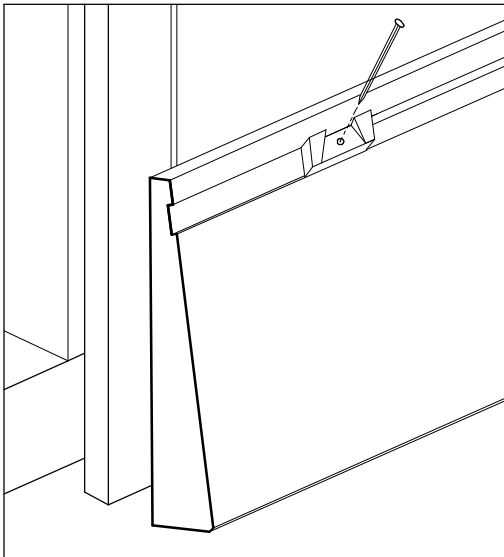
## SMARTCLAD™ WEATHERBOARD PROFILES

Cavity Batten

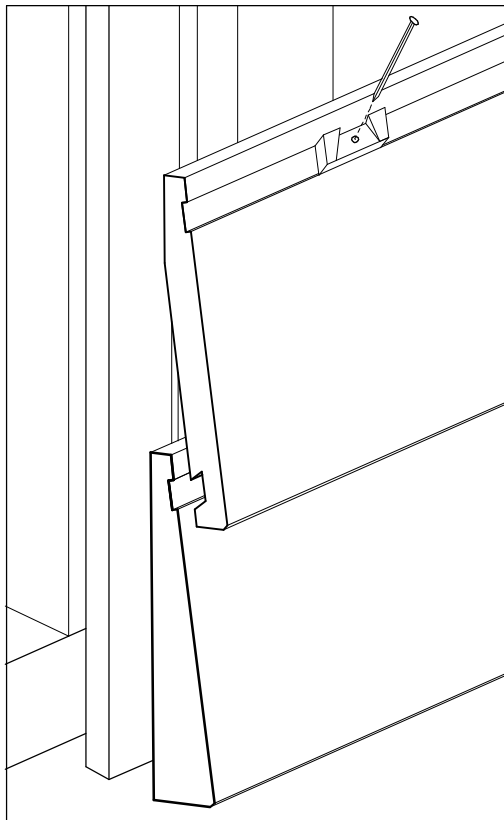
Position the Starter Board

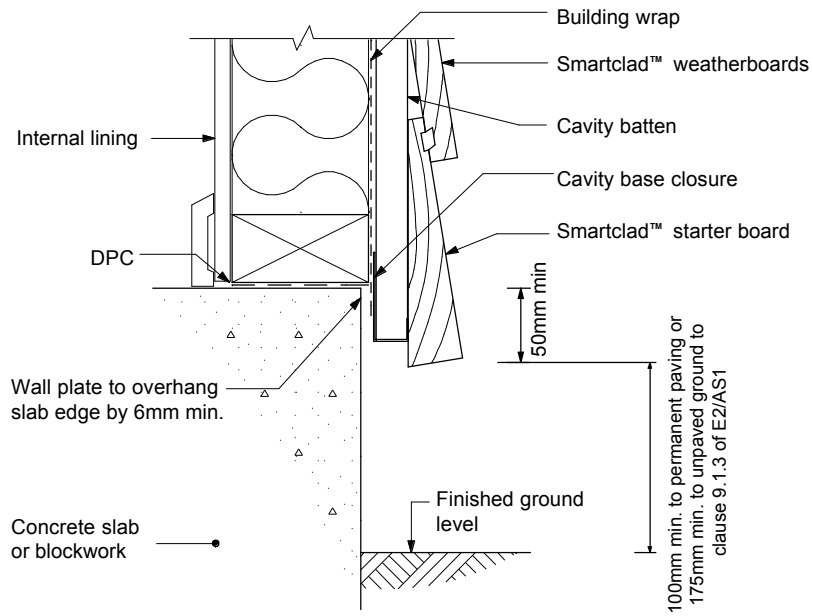


Secure the Starter Board

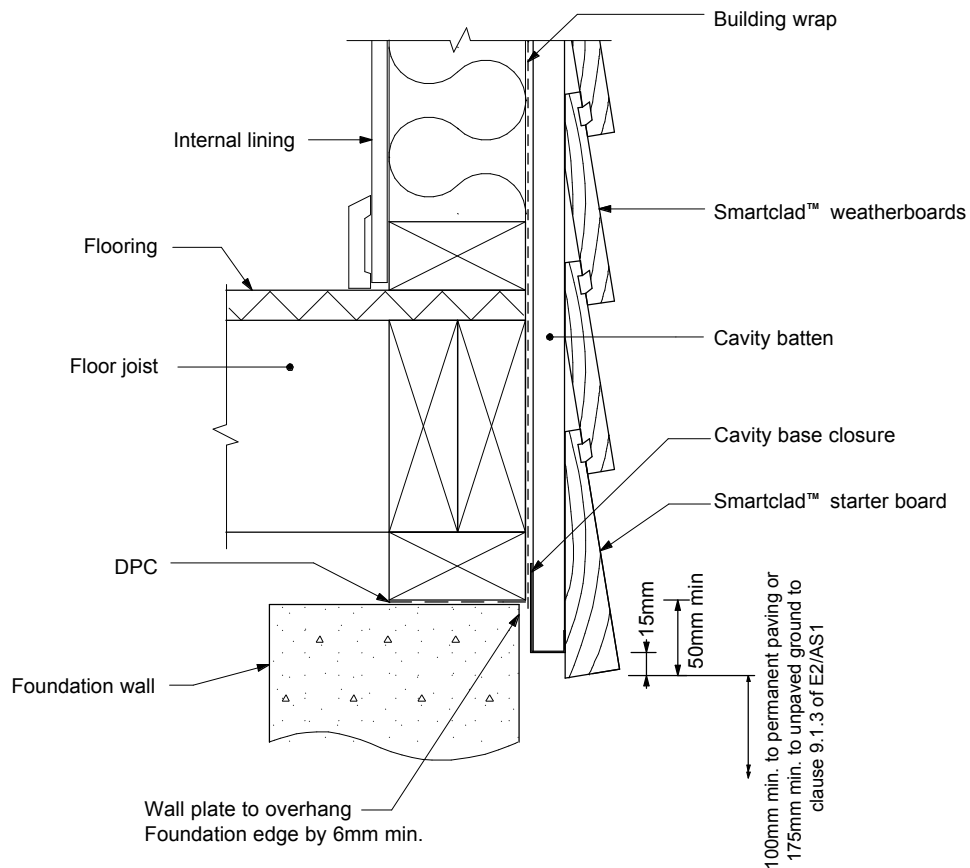


Apply each Weatherboard

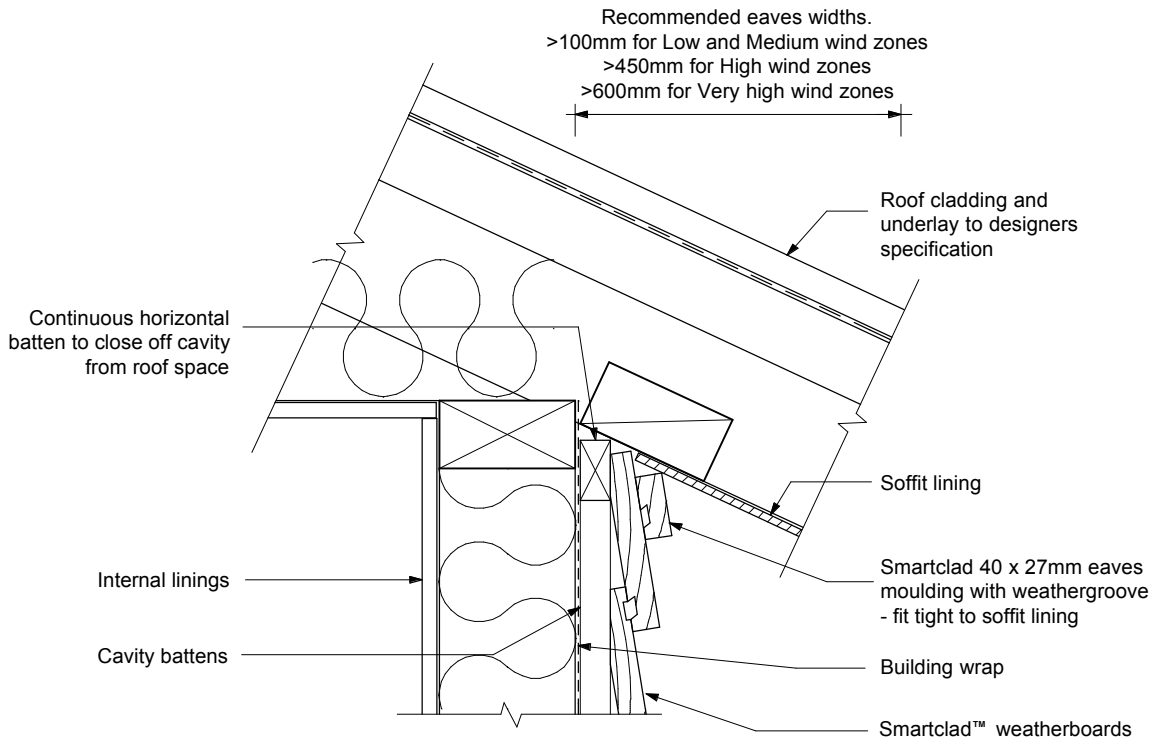




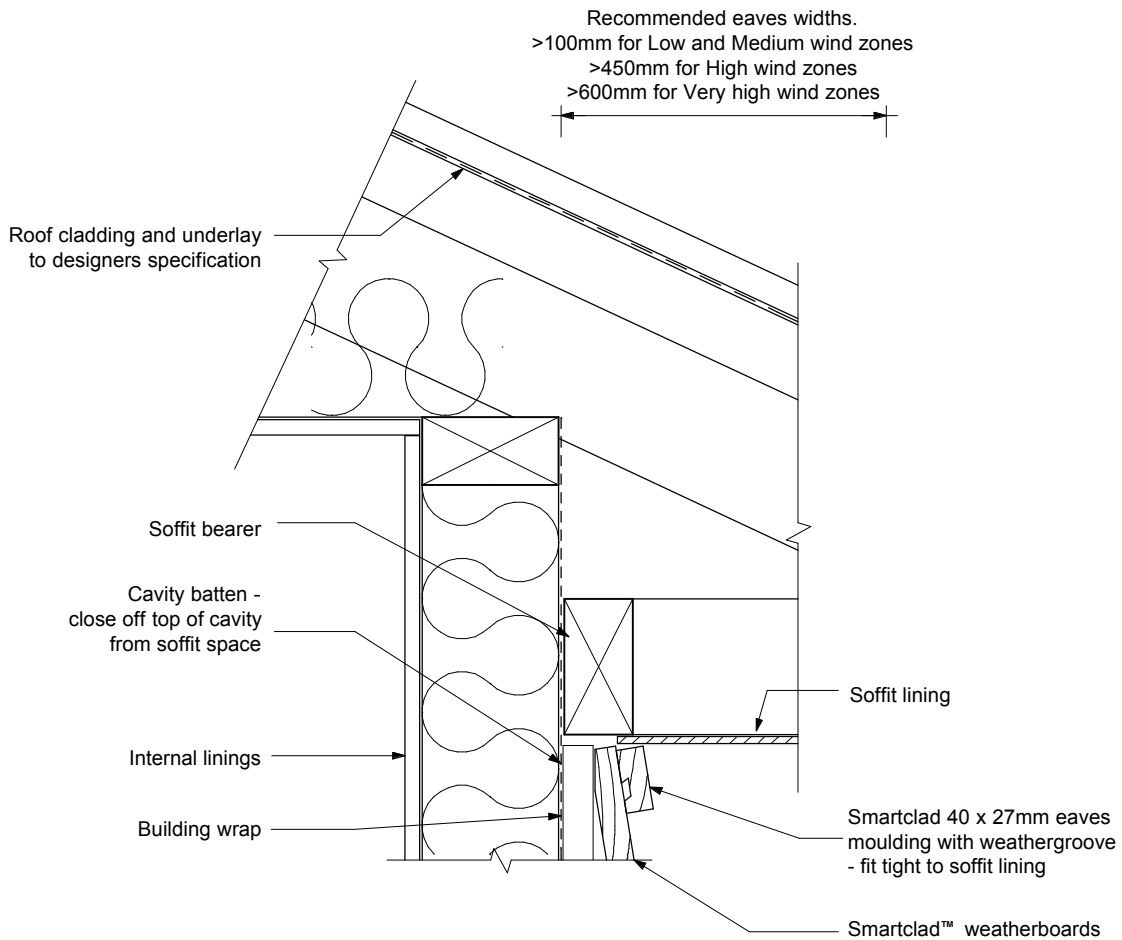
**Figure 2.01 Cavity fixed - Base of wall - Concrete floor**



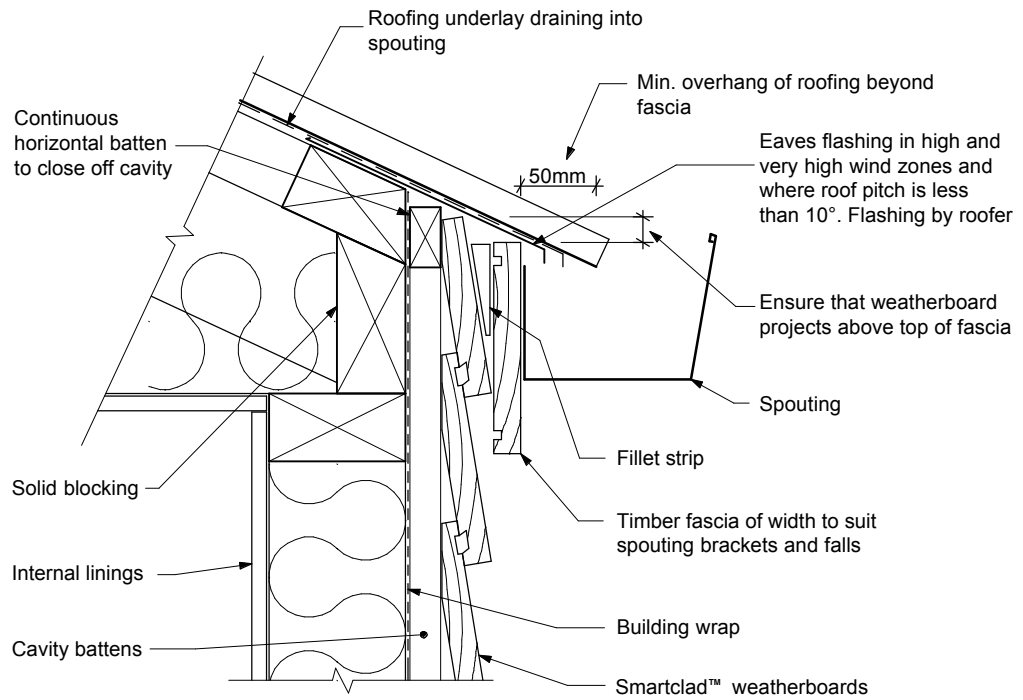
**Figure 2.02 Cavity fixed - Base of wall - Timber floor**



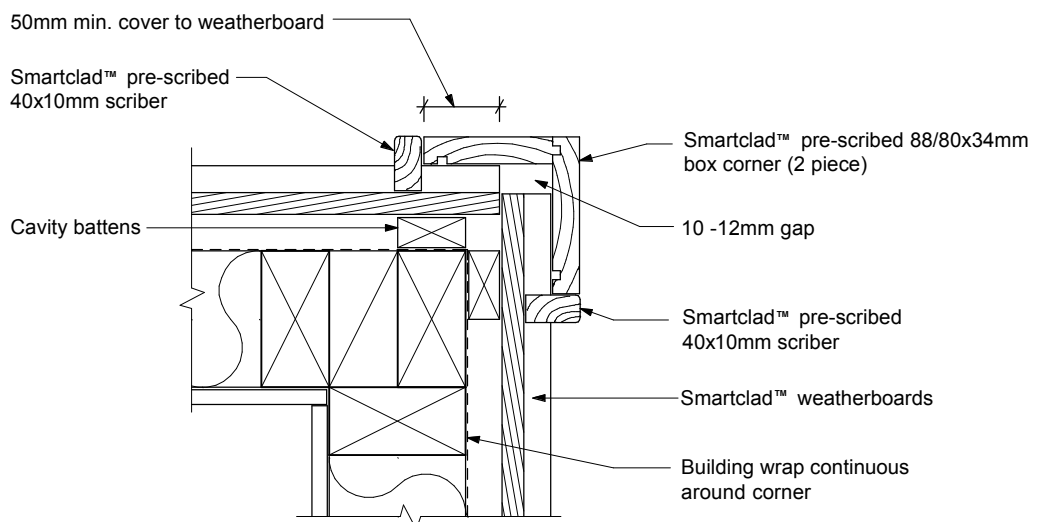
**Figure 2.03 Cavity fixed - Eaves - angled soffit**



**Figure 2.04 Cavity fixed - Eaves - flat soffit**



**Figure 2.05 Cavity fixed - Eaves - no soffit**



**Figure 2.06 Cavity fixed - External corner - Pre-scribed box (2 piece)**

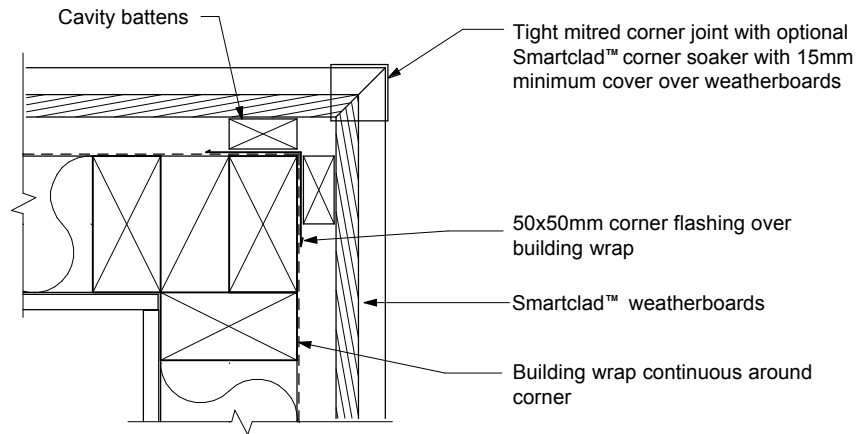


Figure 2.07 Cavity fixed - External corner - mitred

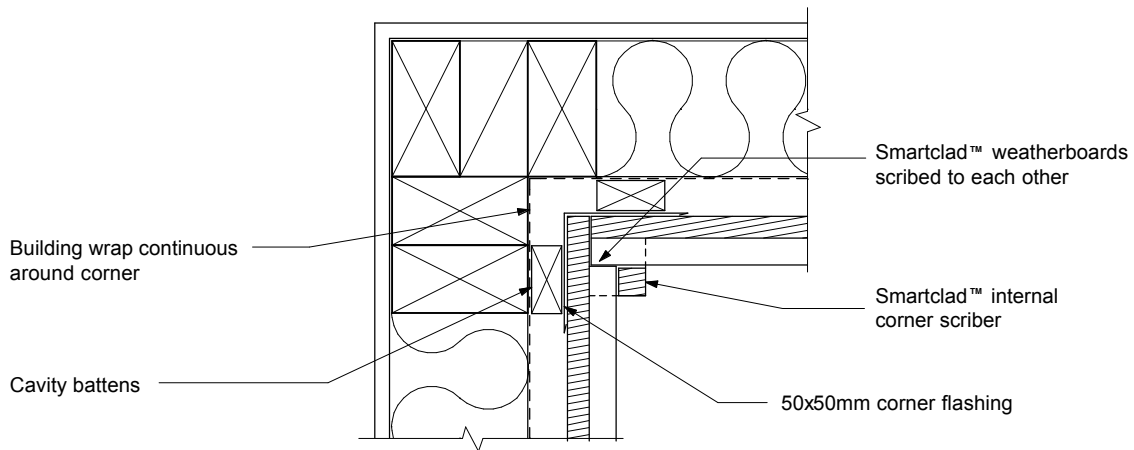
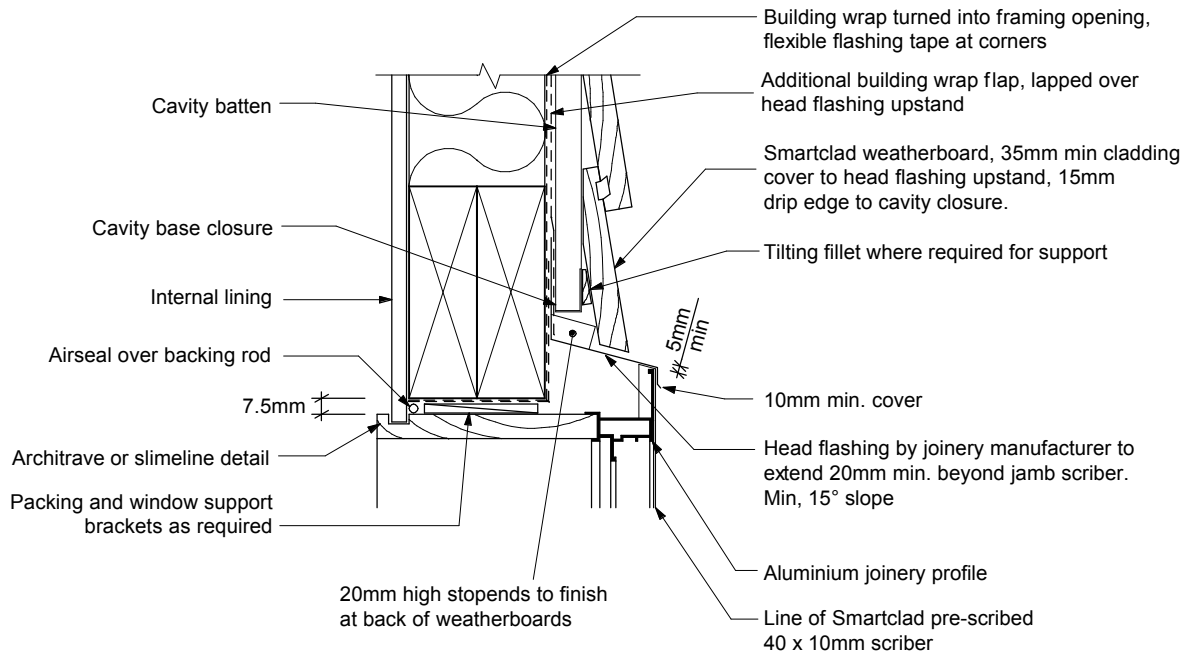
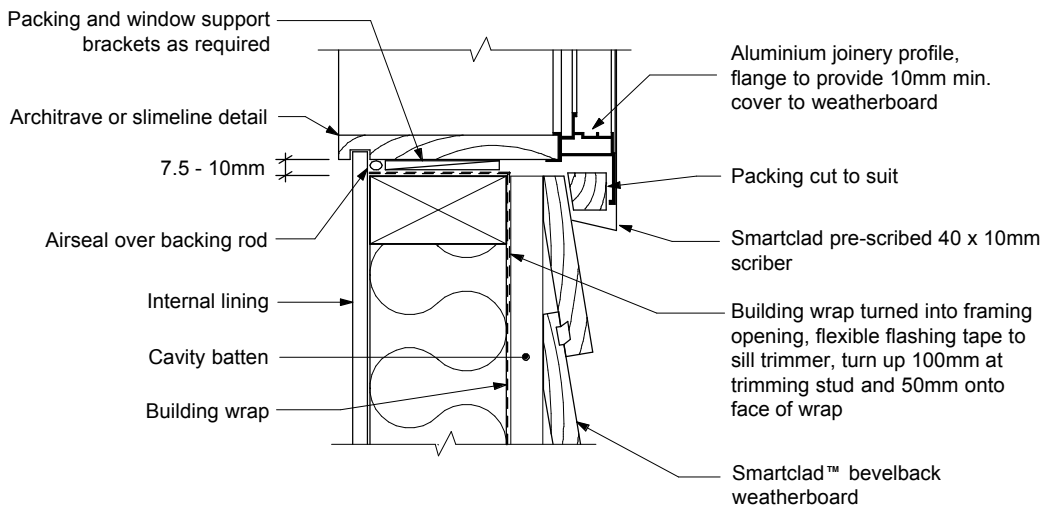


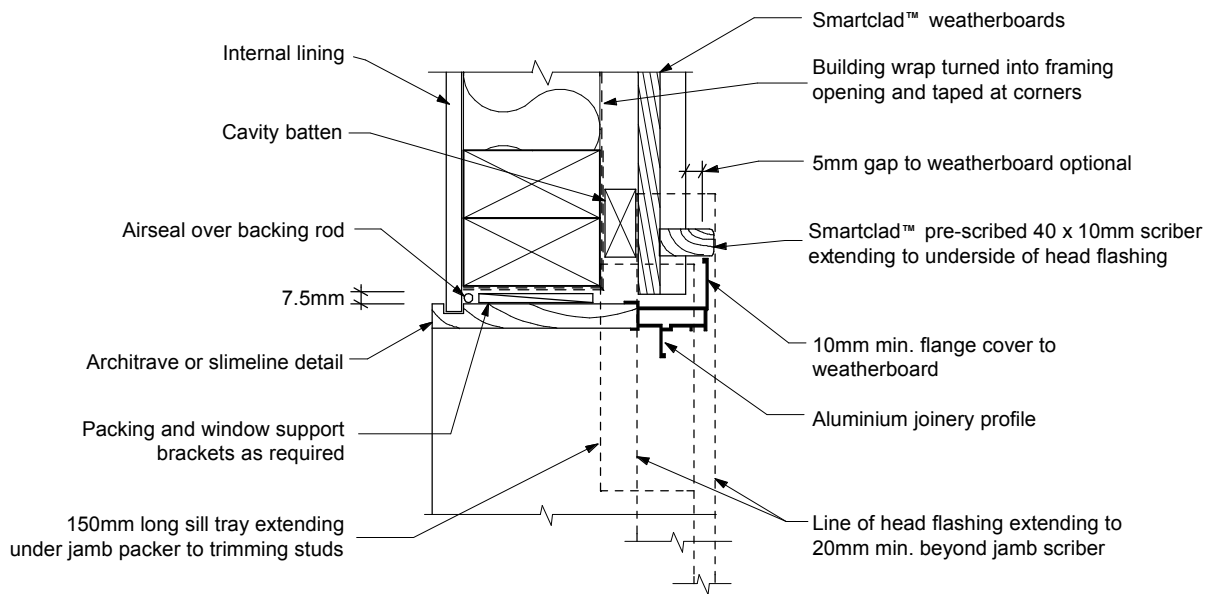
Figure 2.08 Cavity fixed - Internal corner - Pre-scribed corner flashing



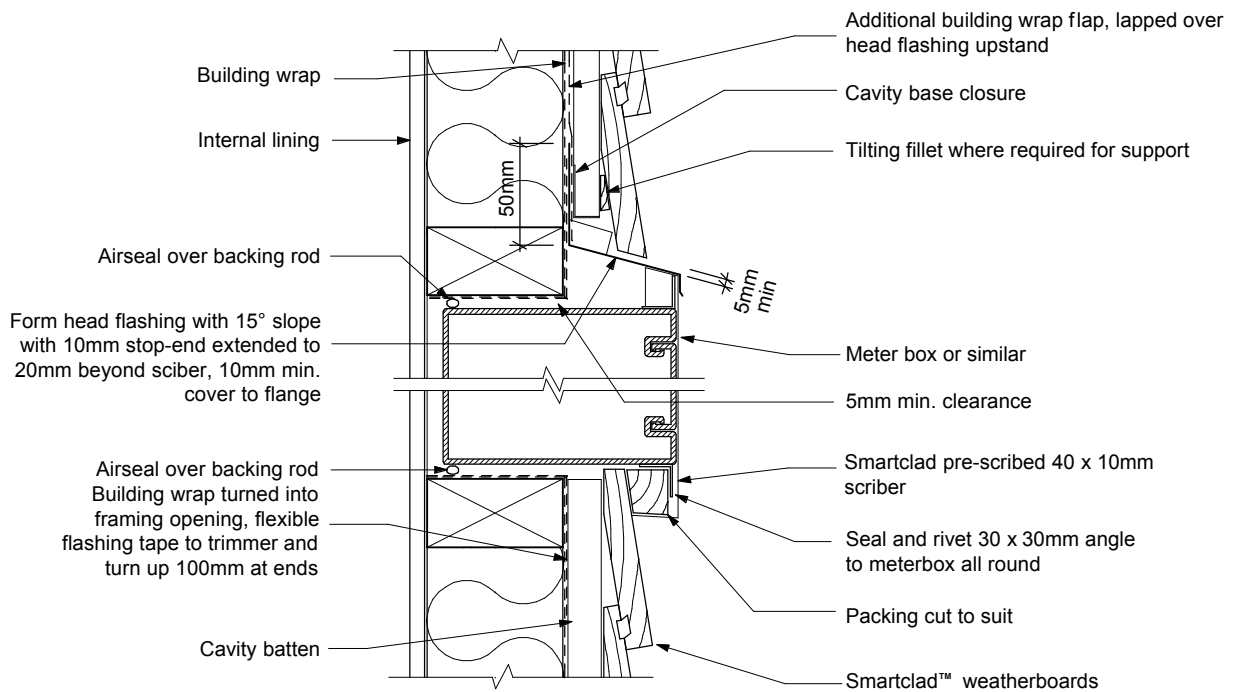
**Figure 2.9 Cavity fixed - Aluminium window - Head**



**Figure 2.10 Cavity fixed - Aluminium window - Sill**

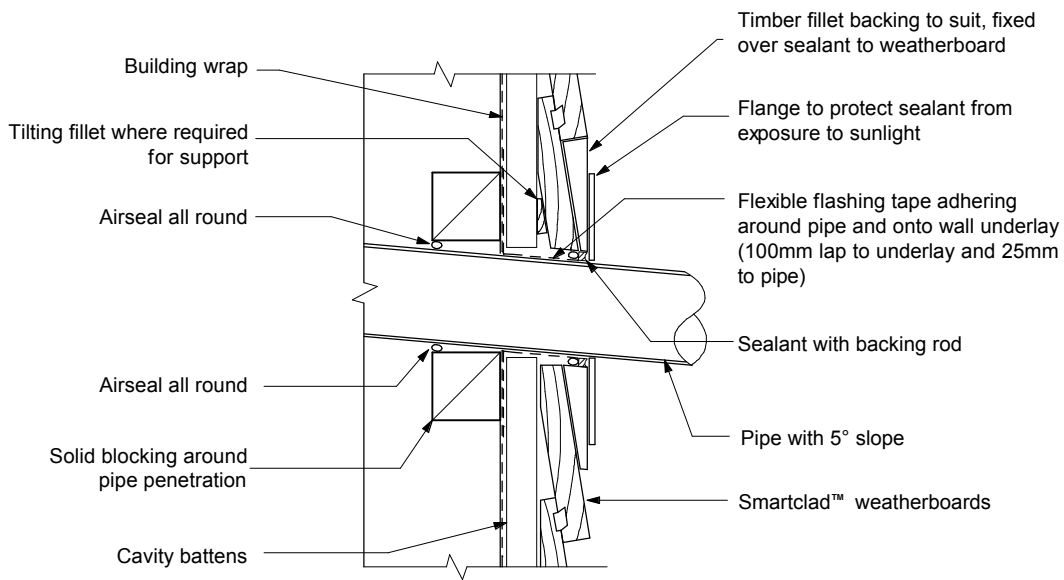


**Figure 2.11 Cavity fixed - Aluminium window - Jamb**

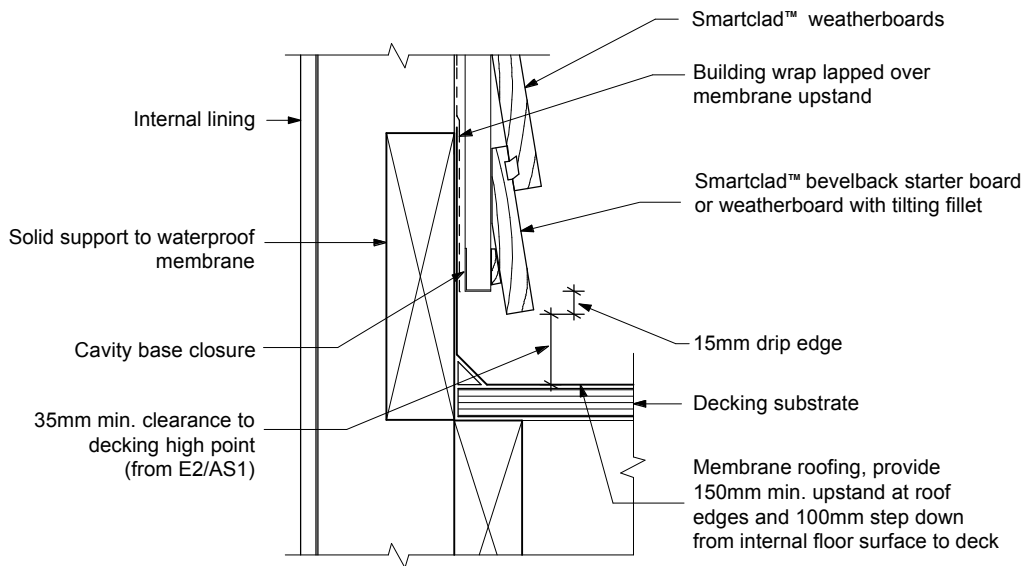


Note : Jamb detail similar to sill with angle to give cover to weatherboard with a Smartclad pre-scribed 40 x 10mm scribe

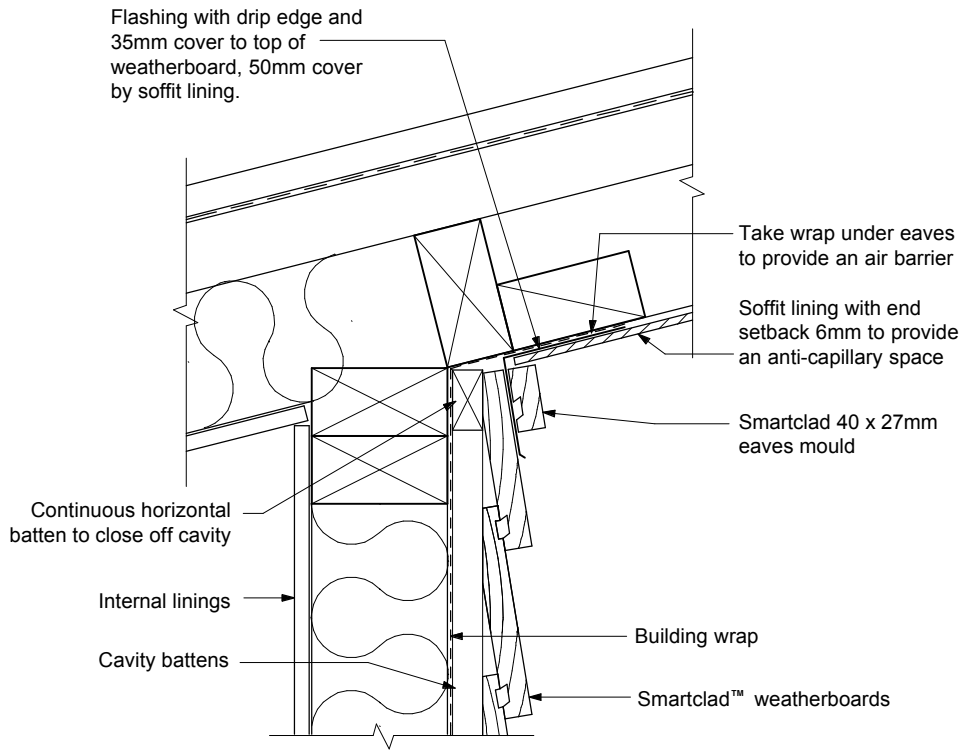
**Figure 2.12 Cavity fixed - Meter box**



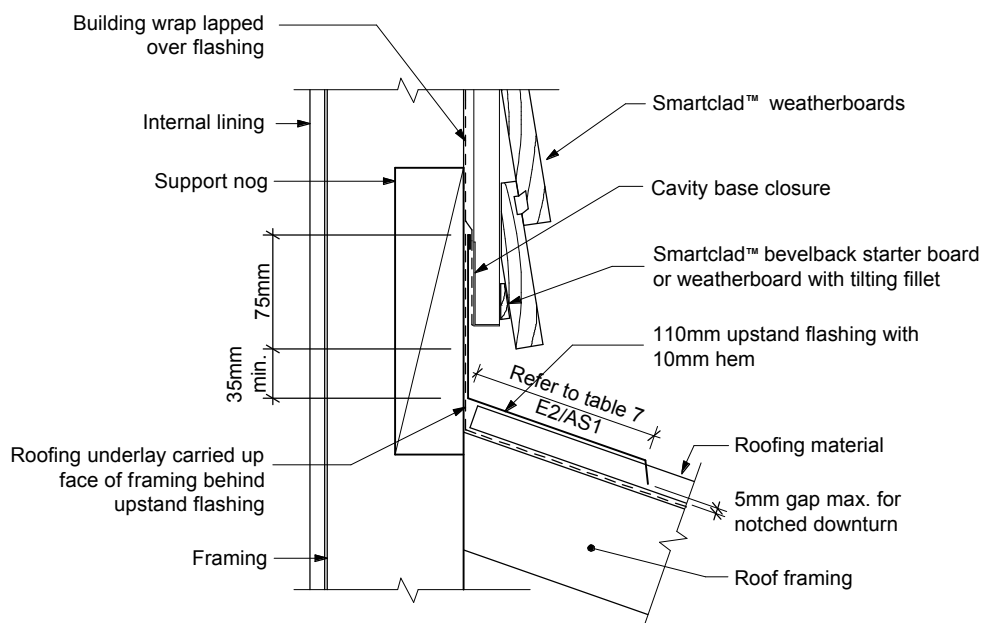
**Figure 2.13 Cavity fixed - Pipe penetration**



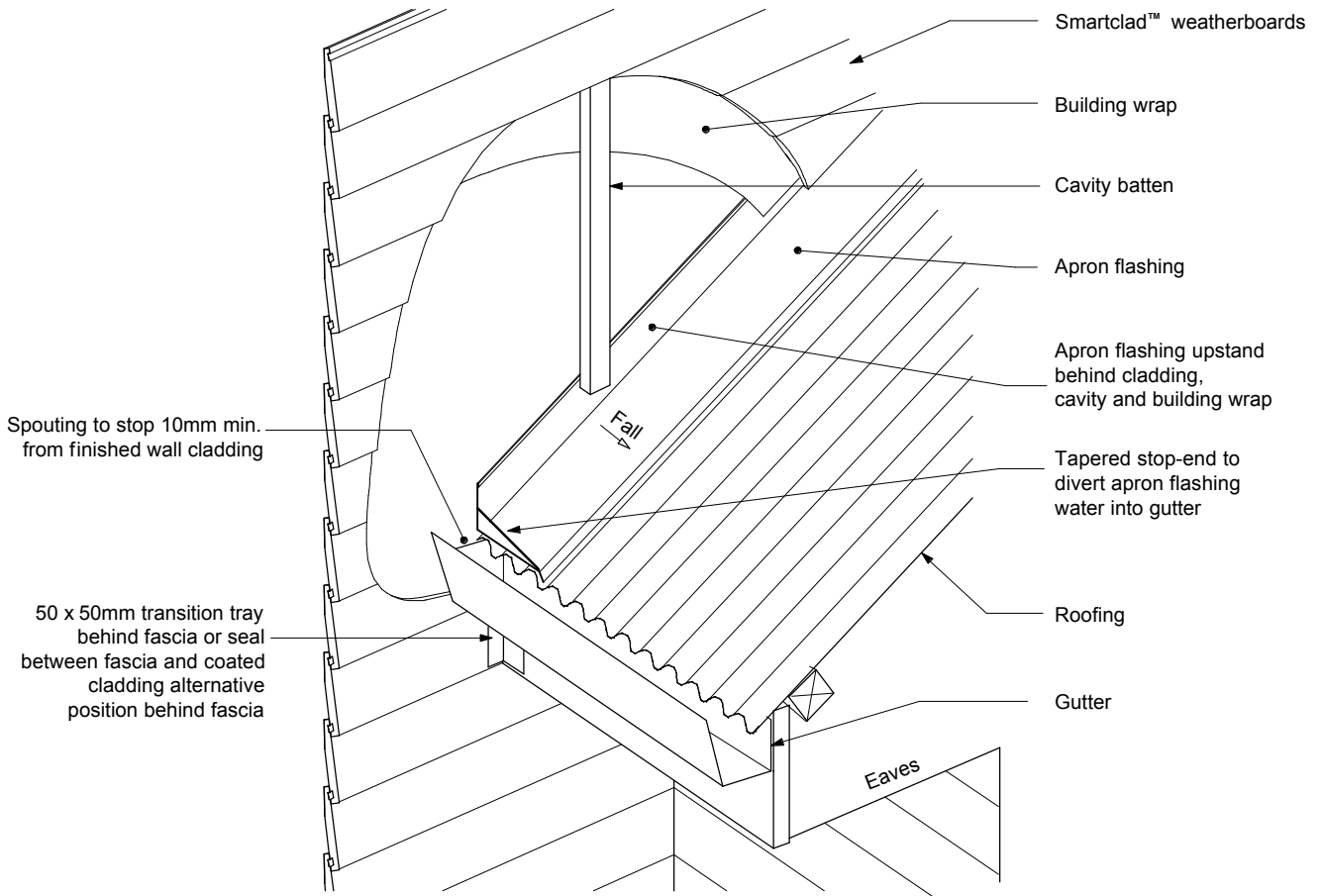
**Figure 2.14 Cavity fixed - Above Waterproof deck**



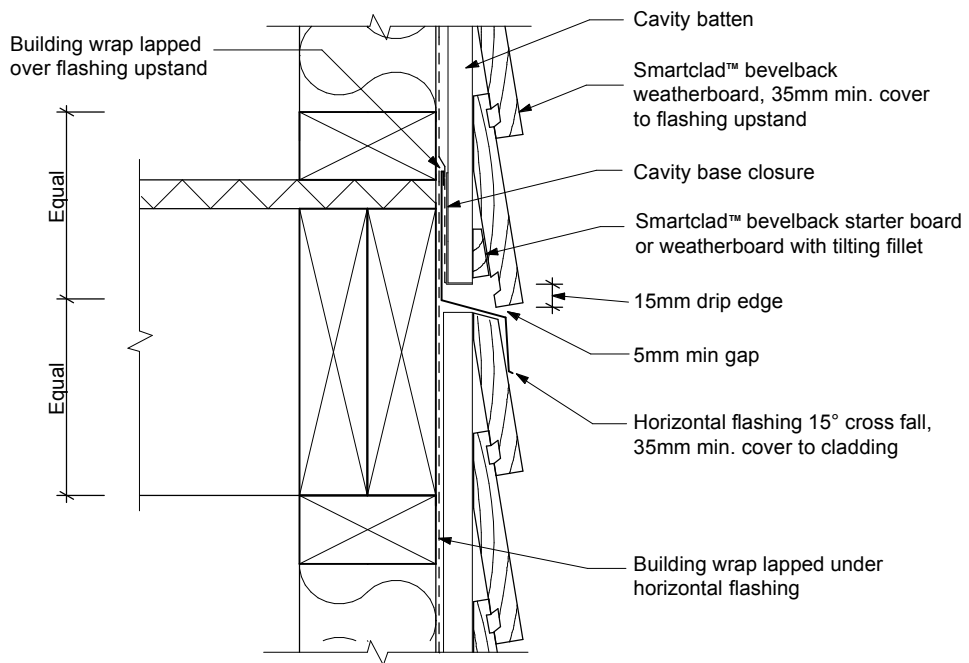
**Figure 2.15 Cavity fixed - Reverse raked soffit**



**Figure 2.16 Cavity fixed - Apron Flashing**

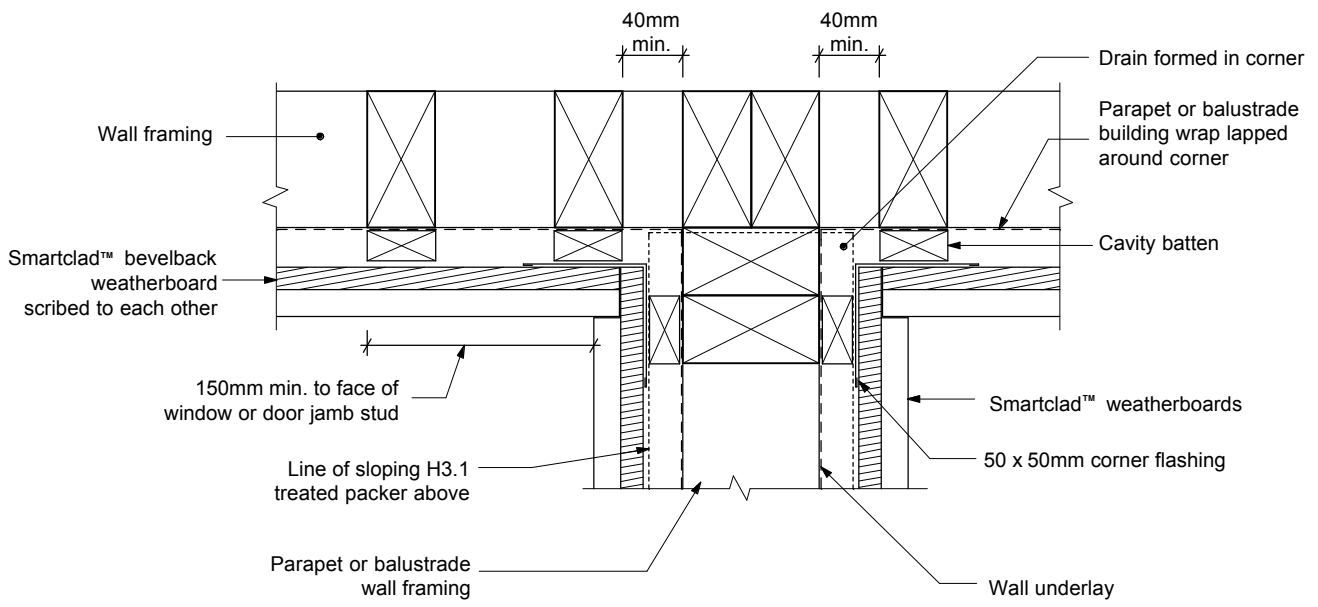


**Figure 2.17 Cavity fixed - Apron flashing - Stop end**

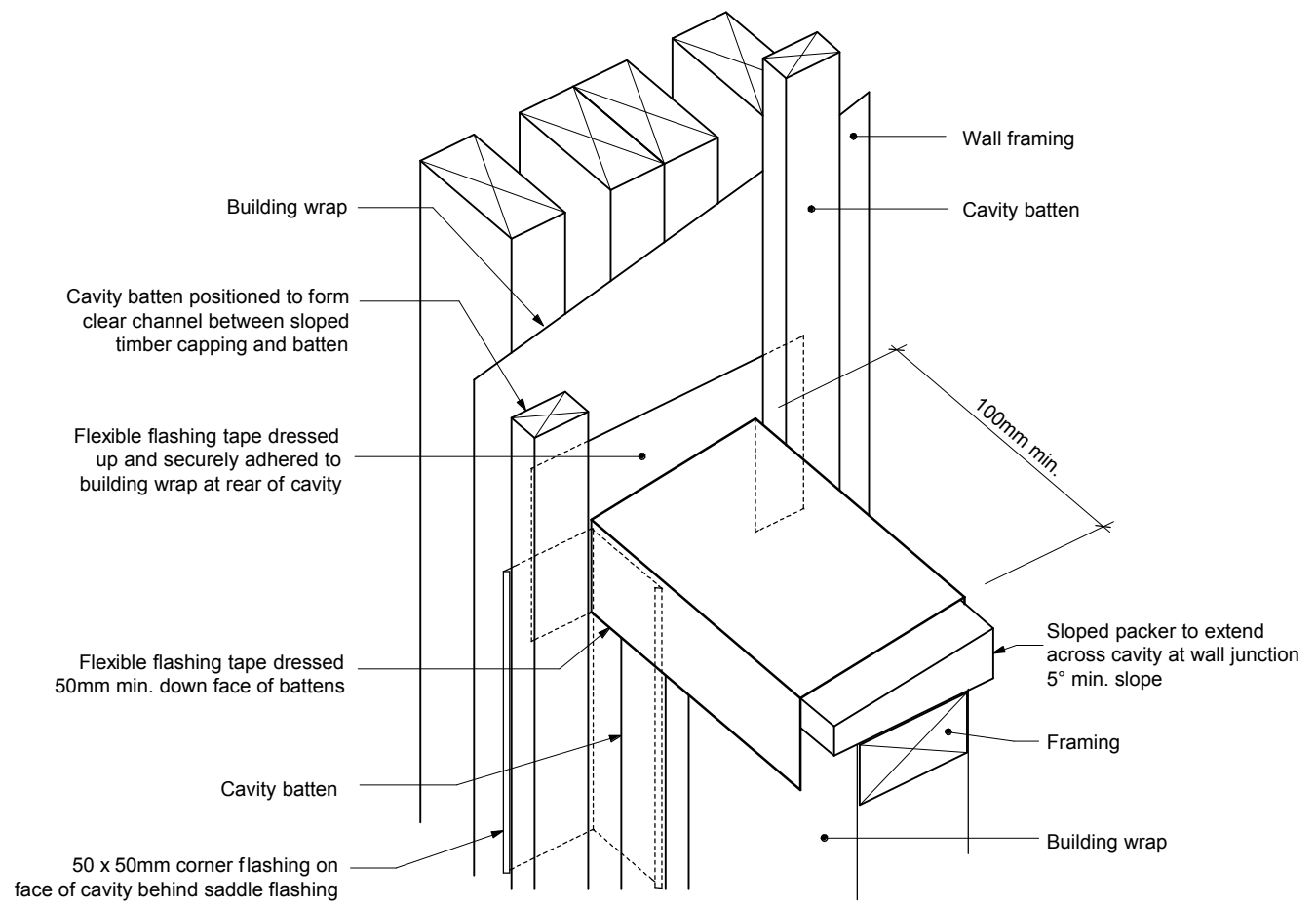


NOTE: Horizontal cavity joints must be provided for walls over 2 storeys in height as per NZBC Acceptable Solution E2/AS1 Paragraph 9.1.9.4(b)

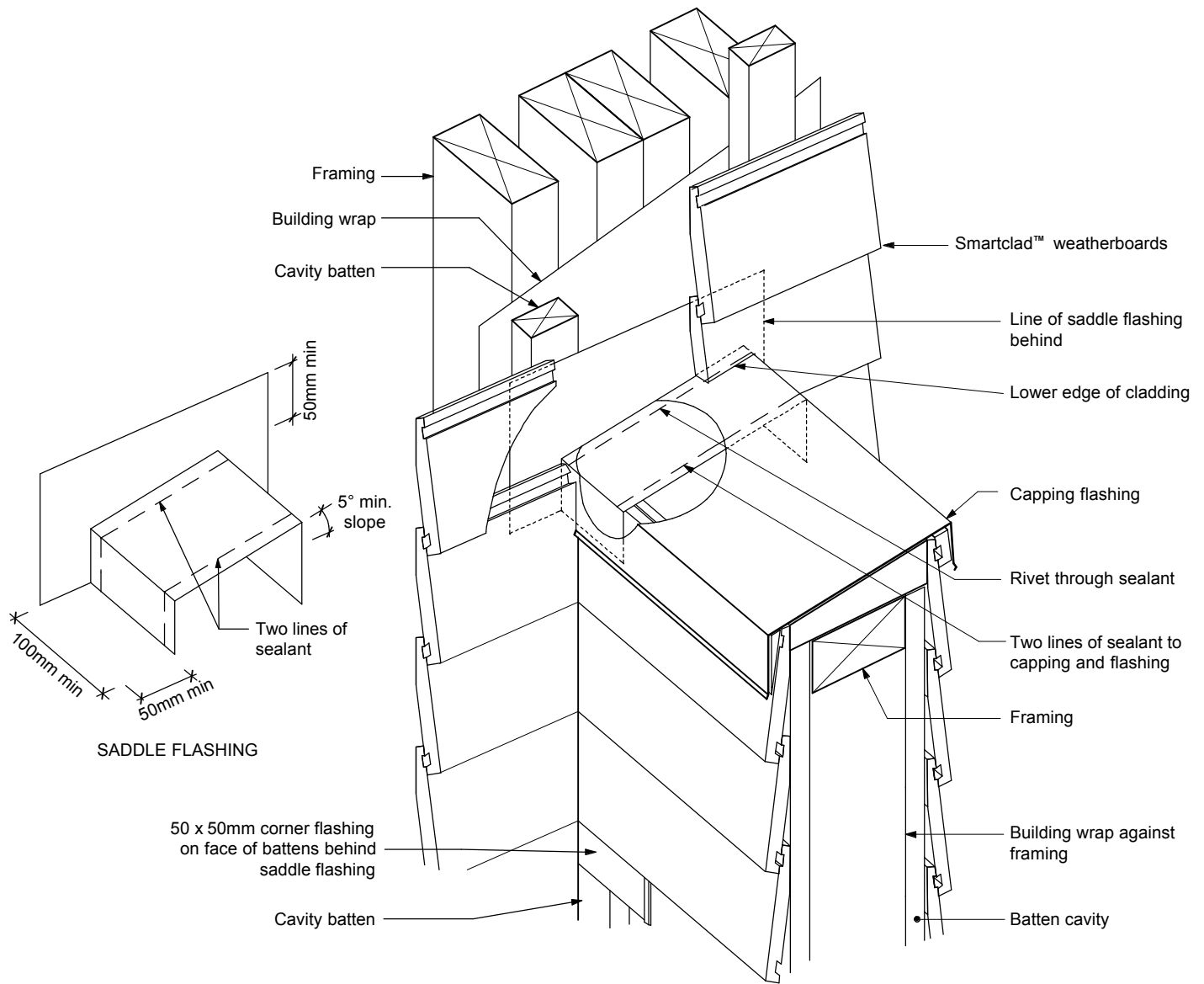
**Figure 2.18 Cavity fixed - Horizontal cavity joint**



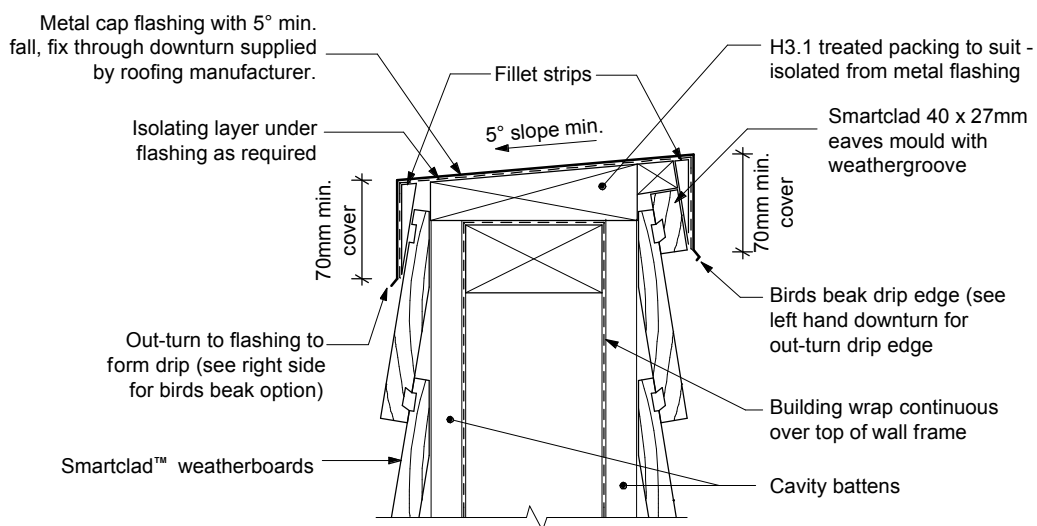
**Figure 2.19 Cavity fixed - Parapet/Balustrade - Wall junction - Plan View**



**Figure 2.20(a) Cavity fixed - Balustrade - Wall junction - Step 1**



**Figure 2.20b Cavity fixed - Parapet/Balustrade - Saddle install - Step 2**



Note : Install flexible flashing tape and saddle flashing at junction with full height wall

**Figure 2.21 Cavity fixed - Parapet - Cap flashing**