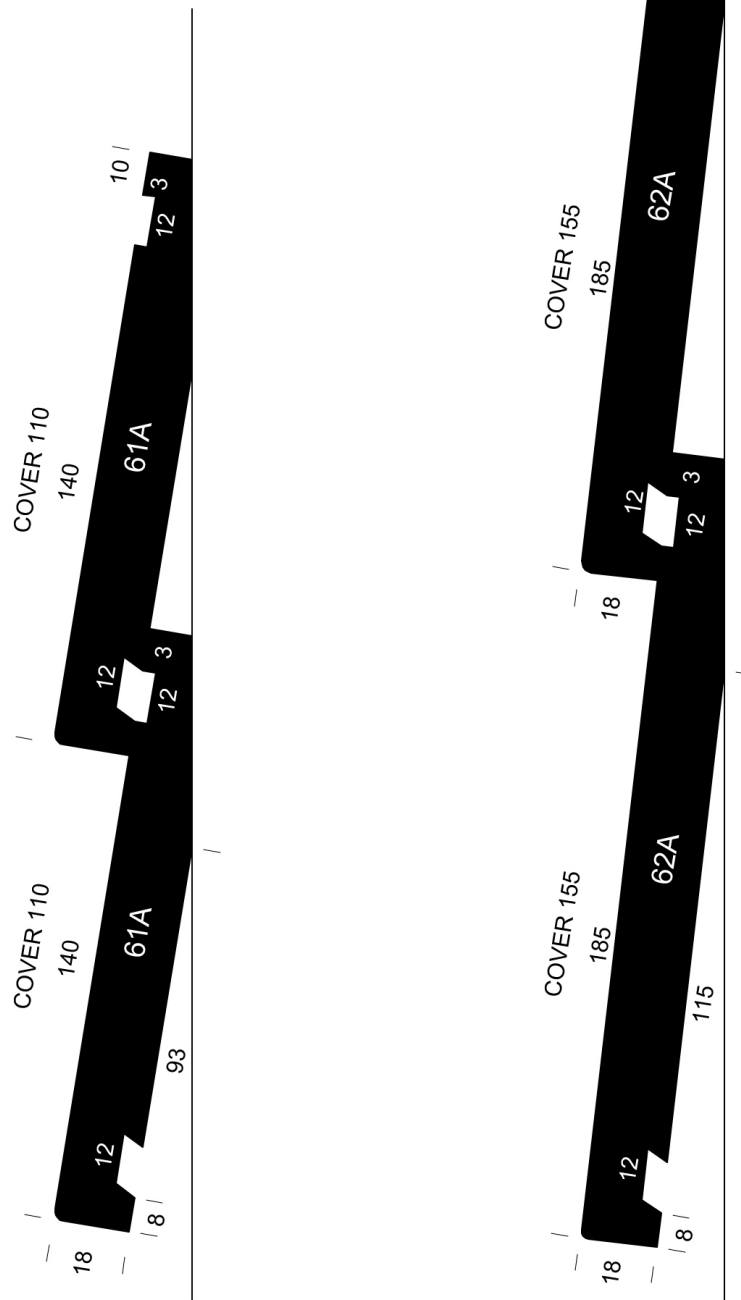


SMARTCLAD™

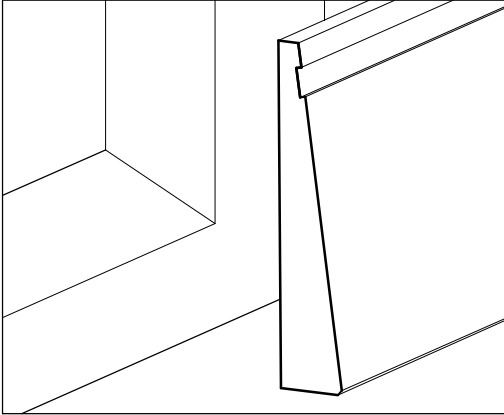
Only our timber weatherboards have the intelligent hidden fixing system



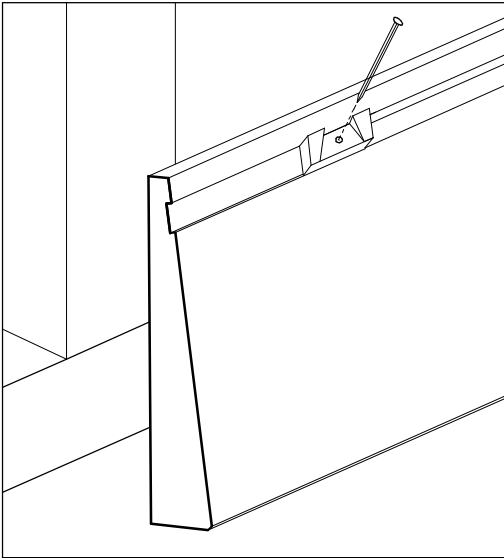
SMARTCLAD™ WEATHERBOARD PROFILES

Direct Fix

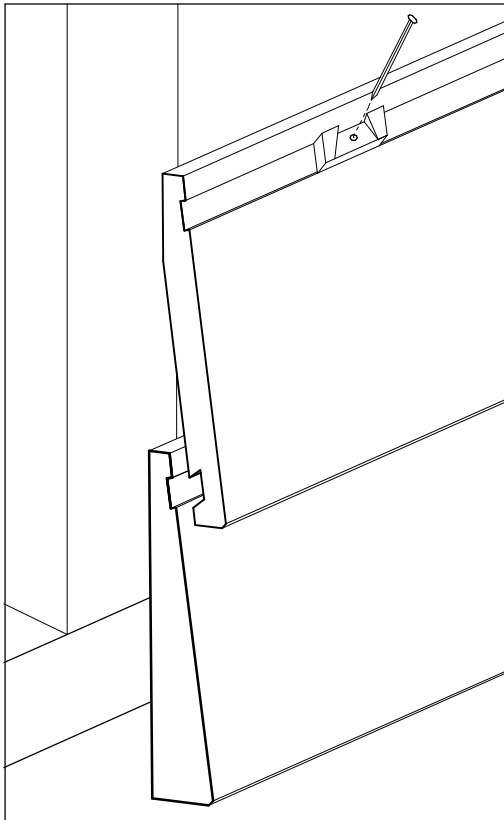
Position the Starter Board



Secure the Starter Board



Apply each Weatherboard



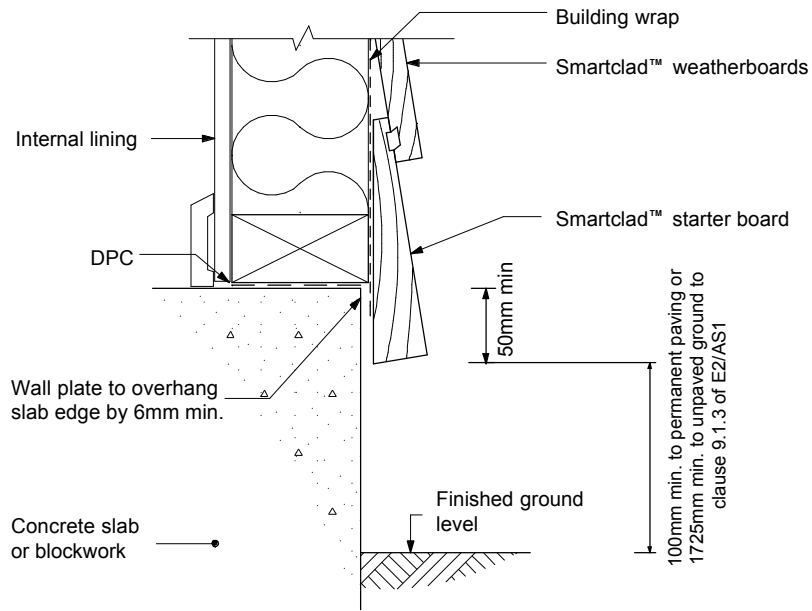


Figure 1.01 Direct fixed - Base of wall - Concrete floor

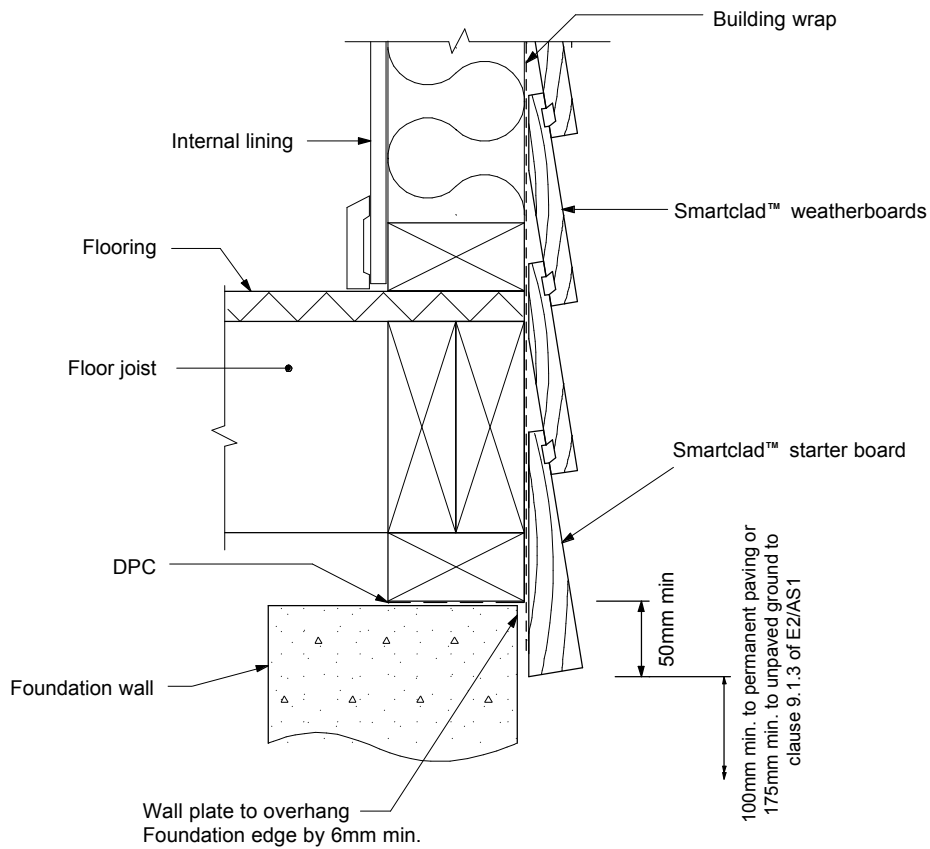


Figure 1.02 Direct fixed - Base of wall - Timber floor

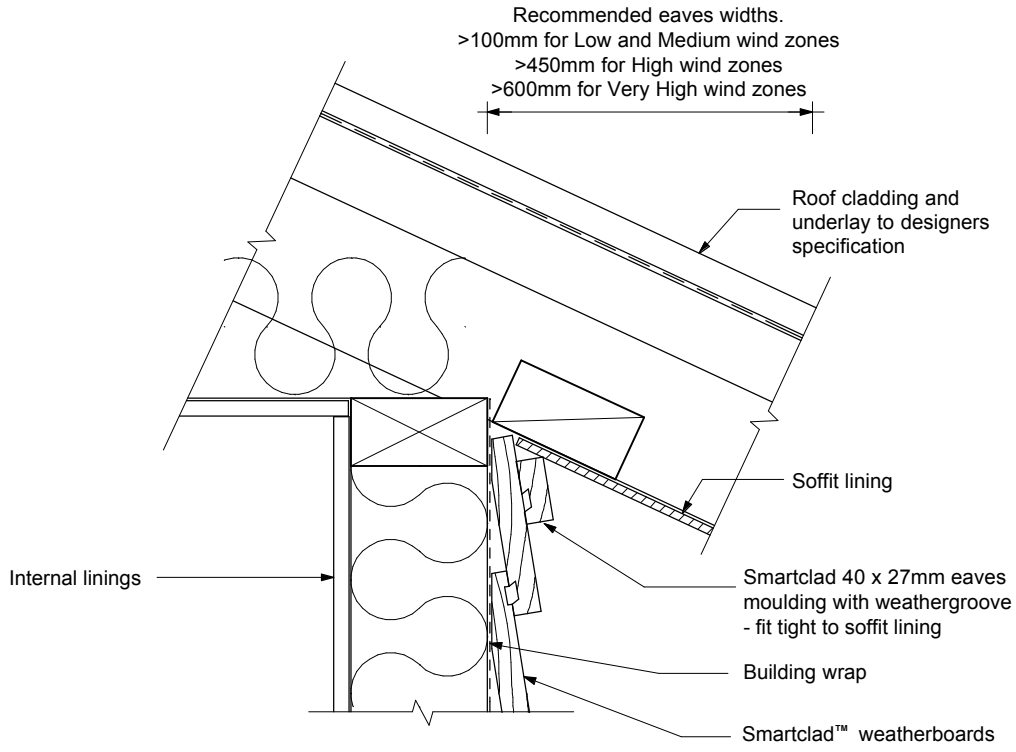


Figure 1.03 Direct fixed - Eaves - angled soffit

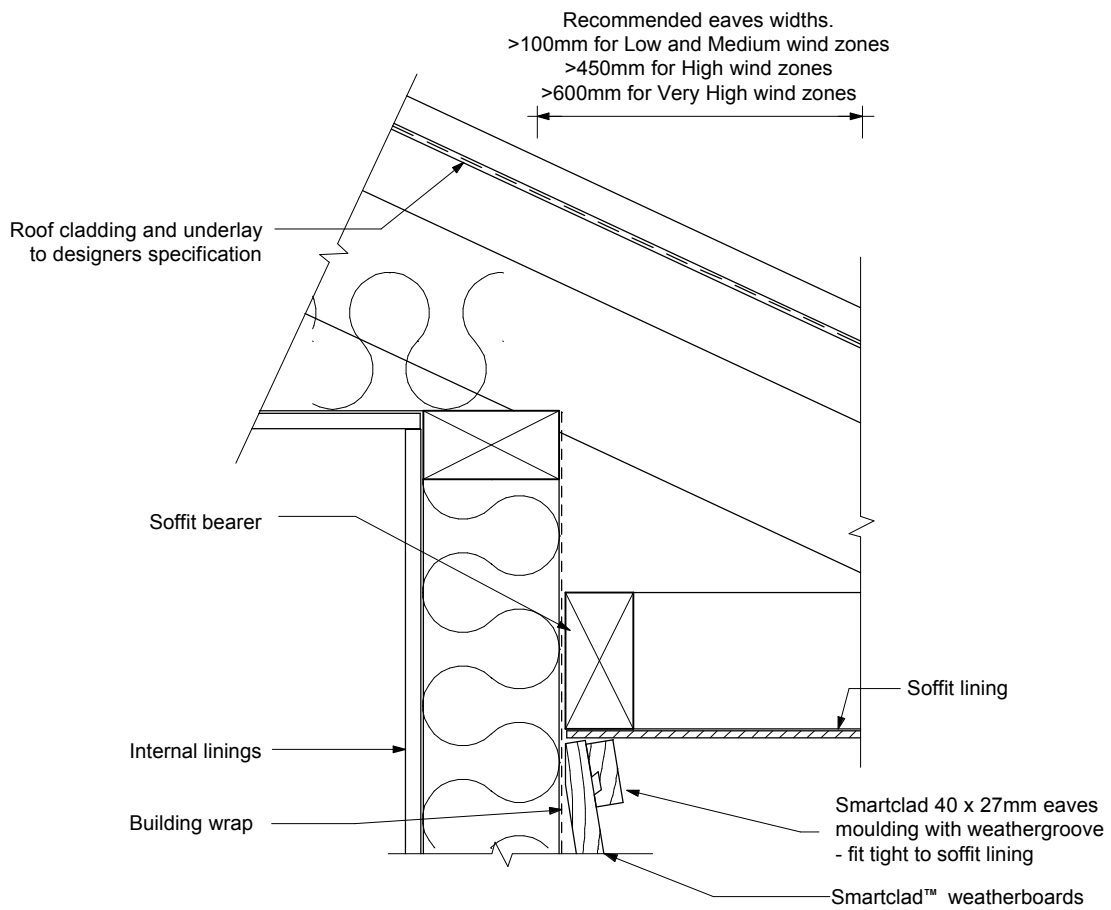


Figure 1.04 Direct fixed - Eaves - flat soffit

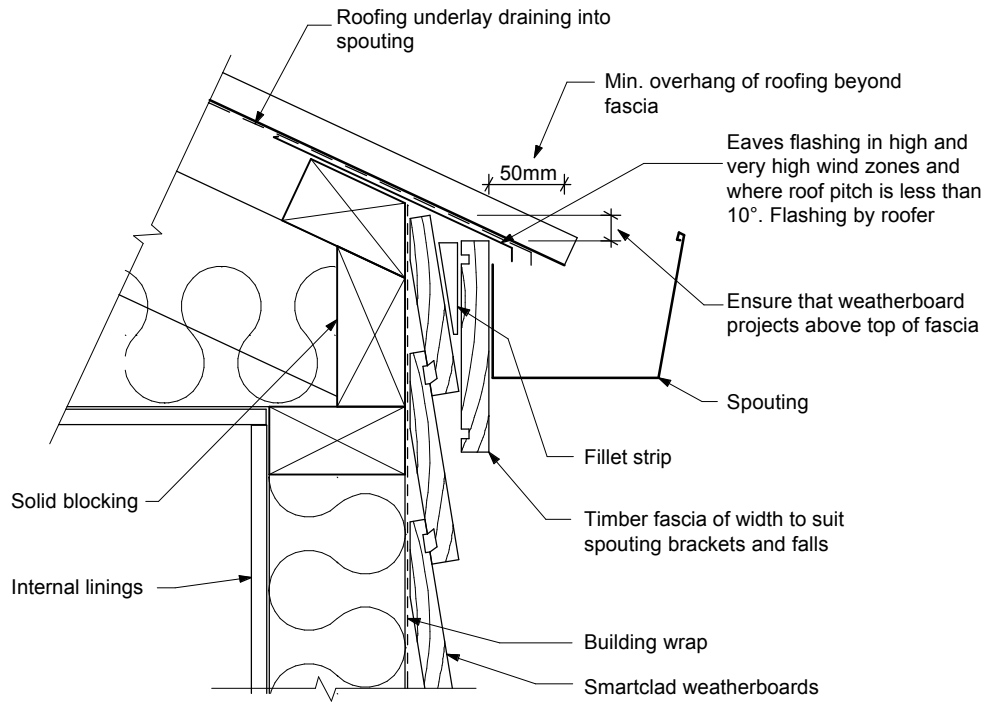


Figure 1.05 Direct fixed - Eaves - no soffit

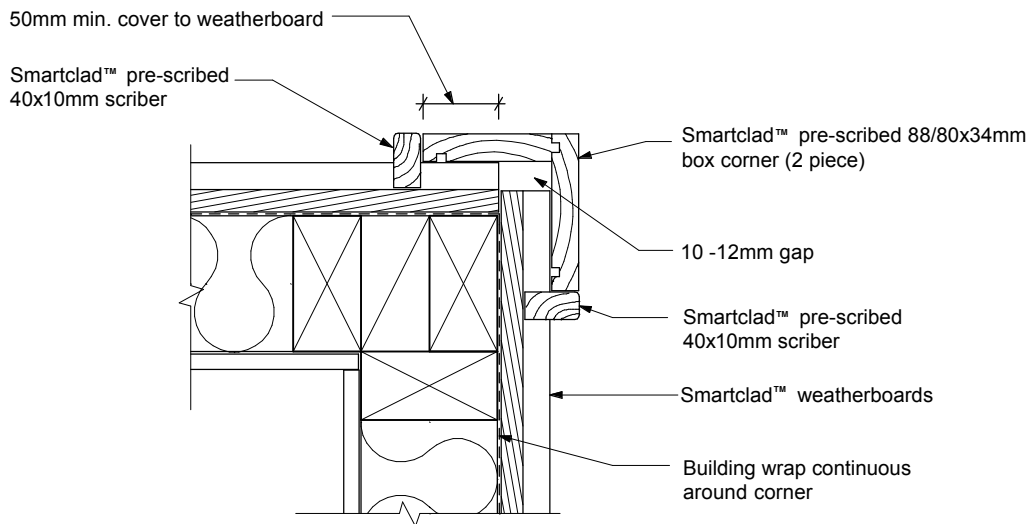


Figure 1.06 Direct fixed - External corner - Pre-scribed box (2 piece)

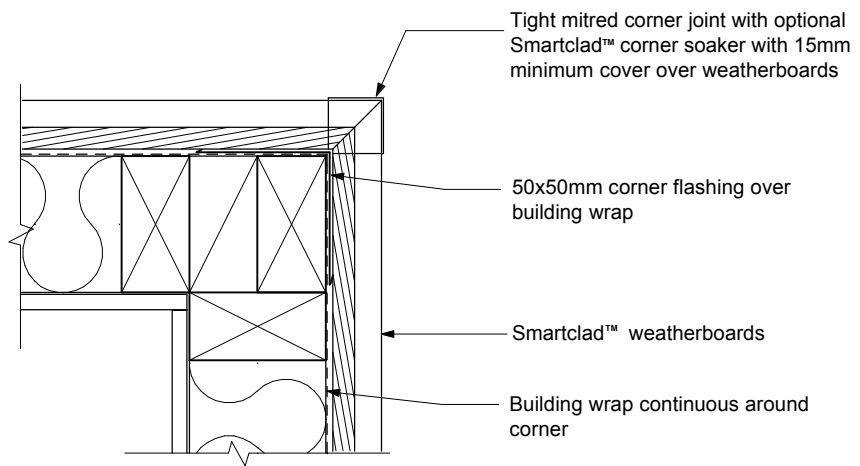


Figure 1.07 Direct fixed - External corner - mitred

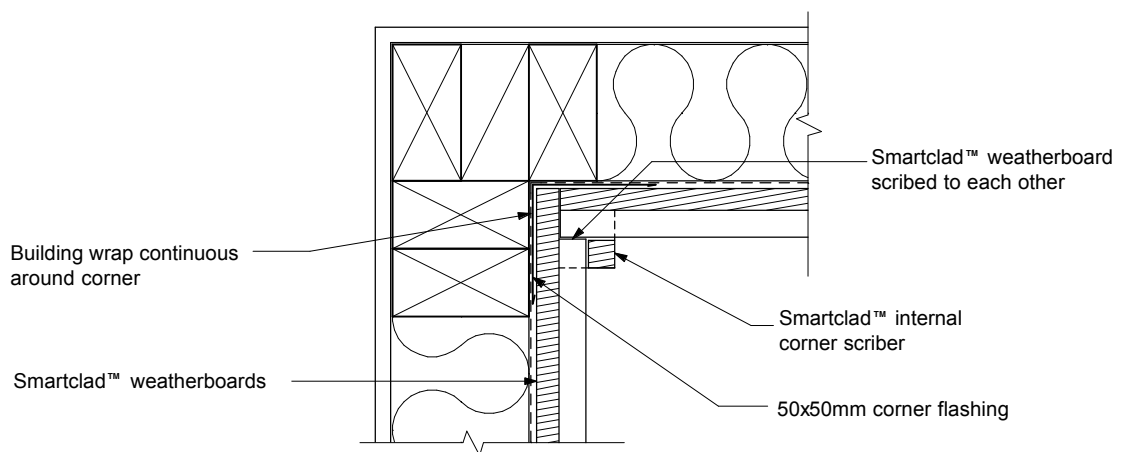


Figure 1.08 Direct fixed - Internal corner - Pre-scribed Scriber

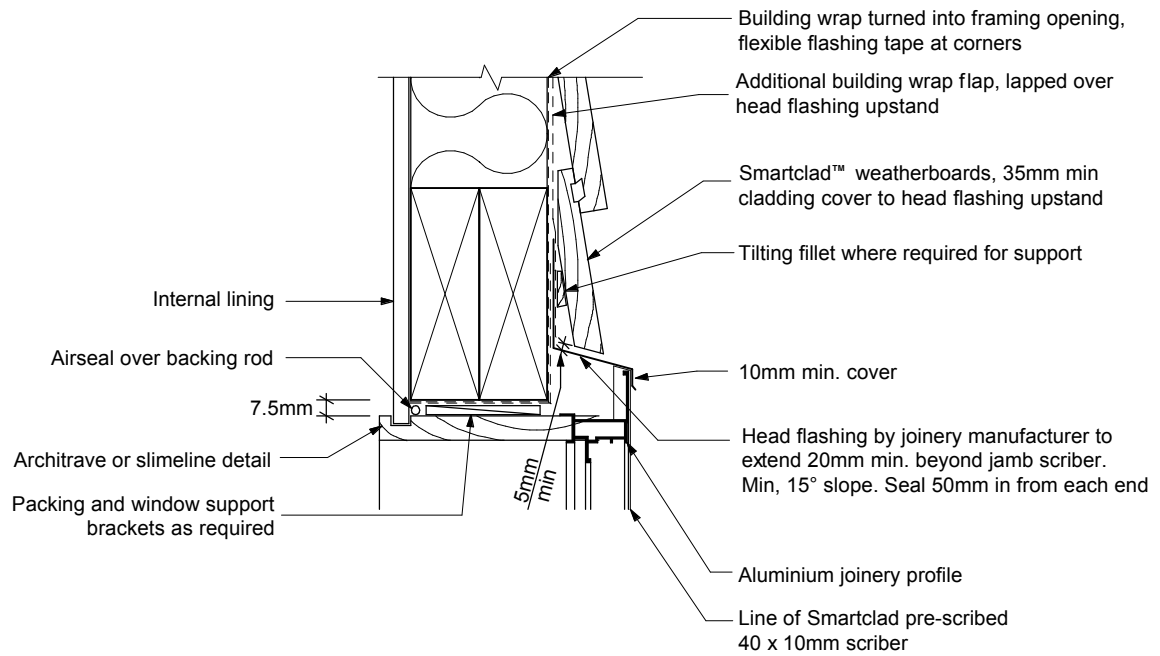


Figure 1.09 Direct fixed - Aluminium window - Head

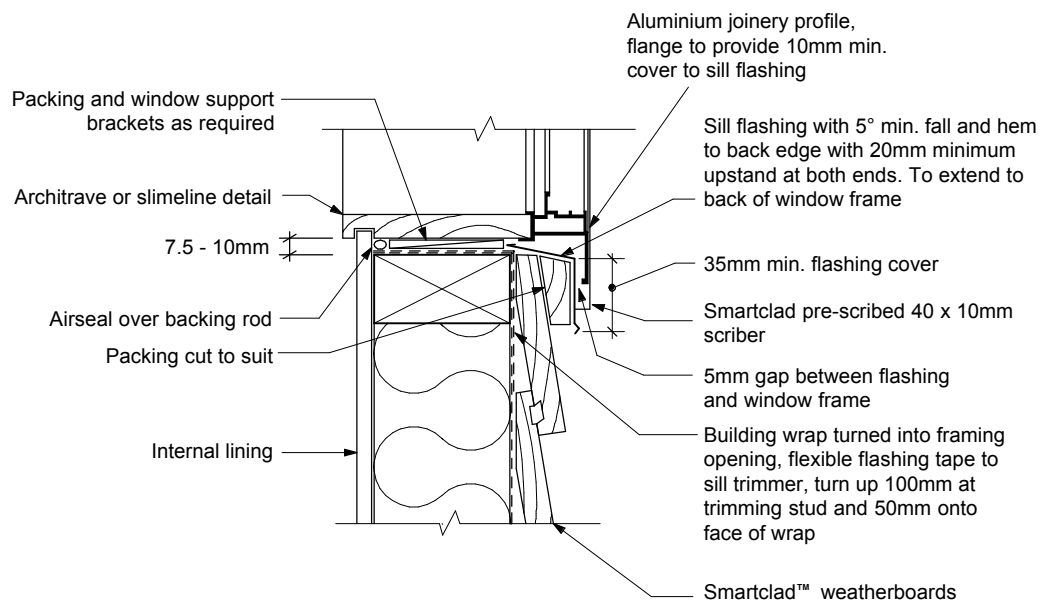


Figure 1.10 Direct fixed - Aluminium window - Sill

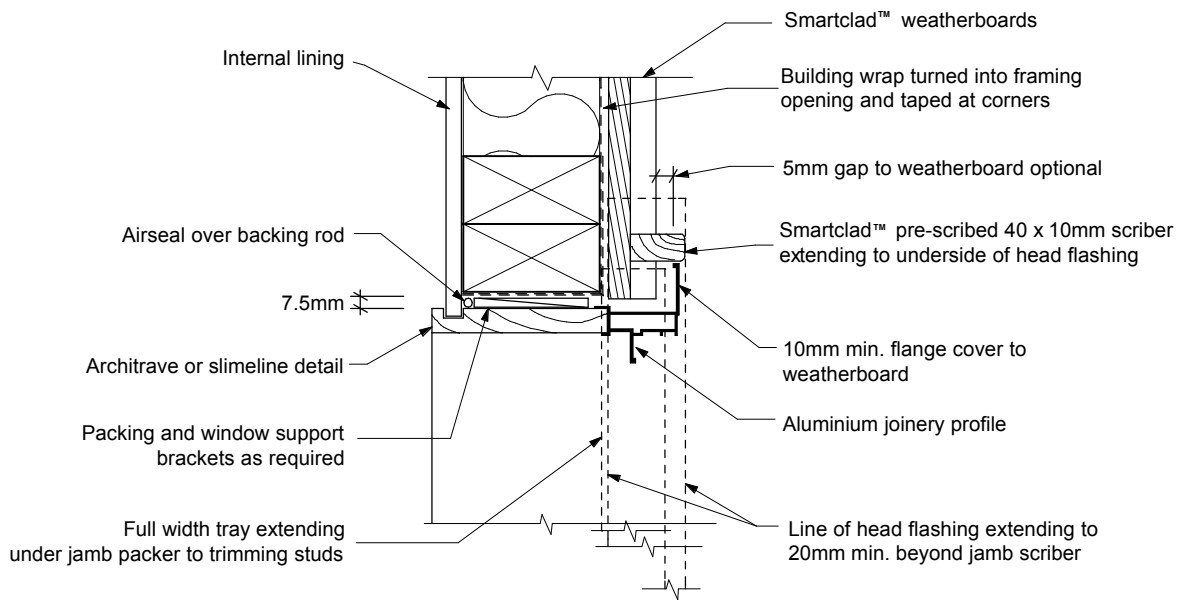
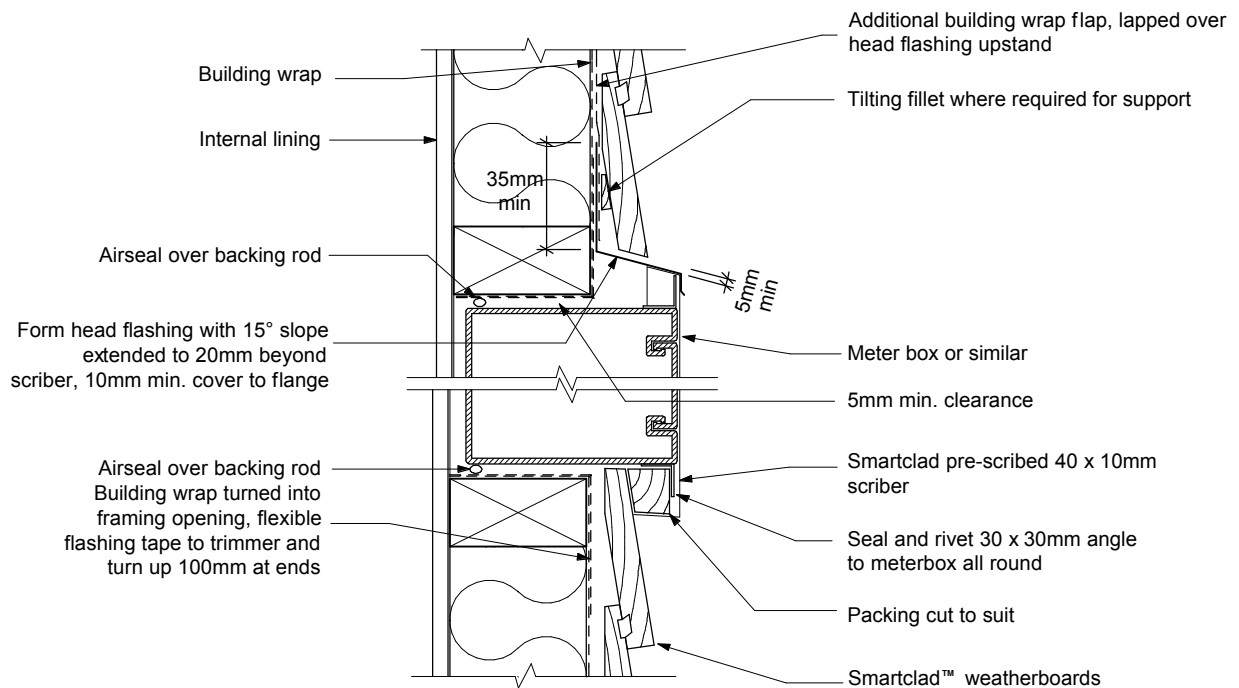


Figure 1.11 Direct fixed - Aluminium window - Jamb



Note : Jamb detail similar to sill with angle to give cover to weatherboard with a Smartclad pre-scribed 40 x 10mm scribe

Figure 1.12 Direct fixed - Meter box

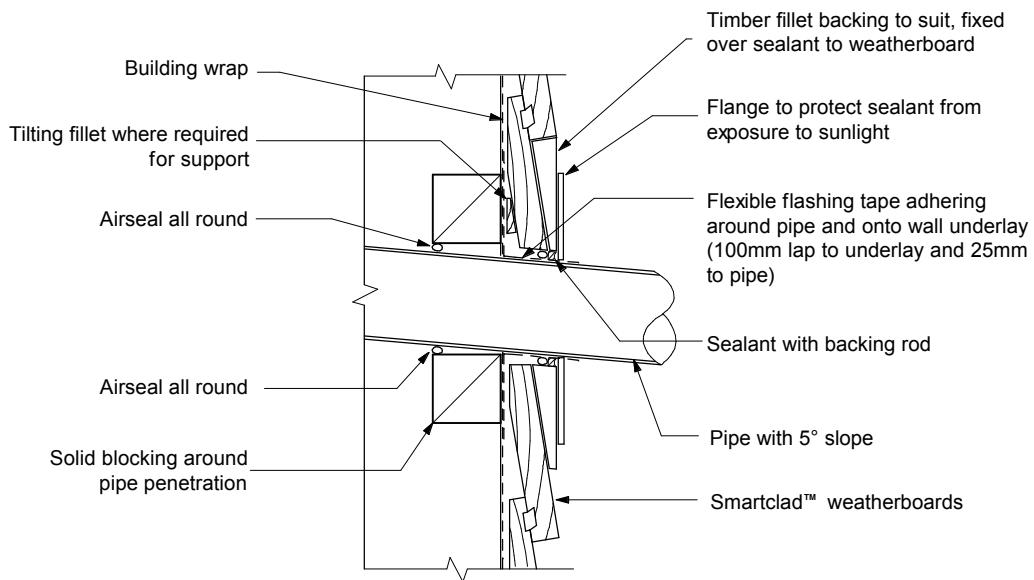


Figure 1.13 Direct fixed - Pipe penetration

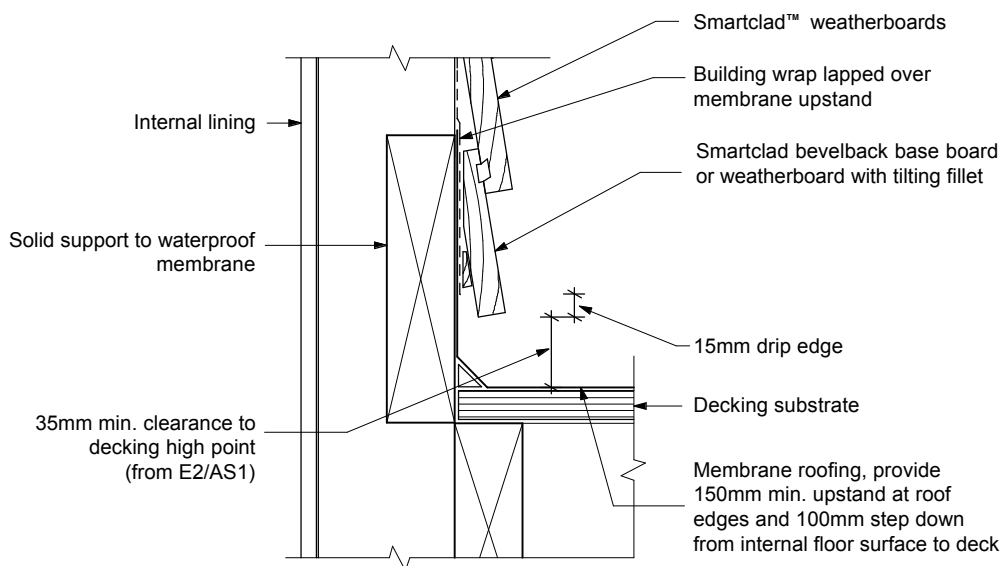


Figure 1.14 Direct fixed - Above Waterproof deck

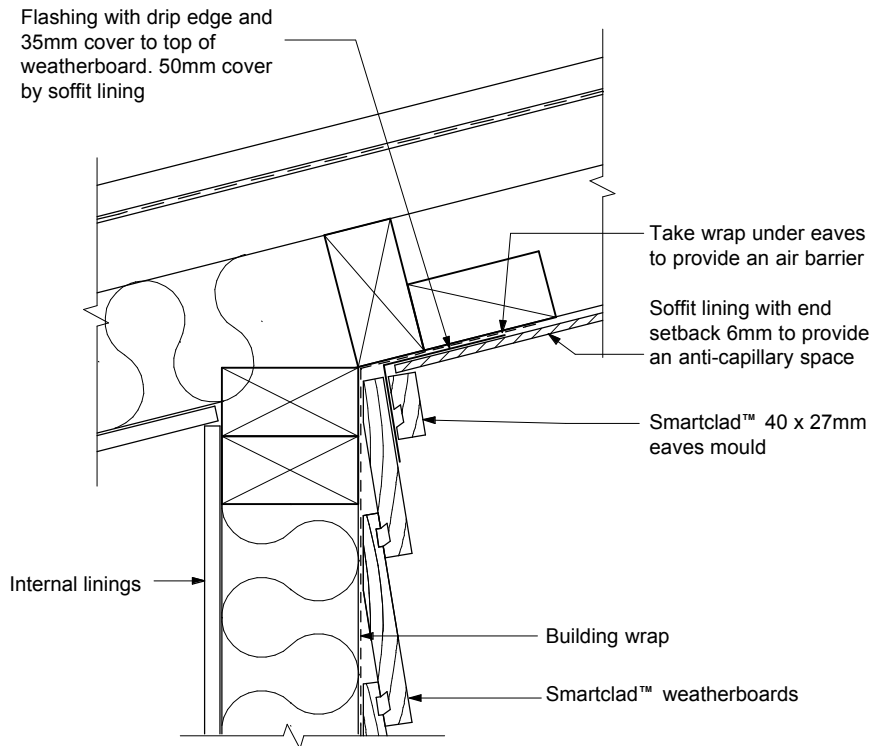


Figure 1.15 Direct fixed - Reverse raked soffit

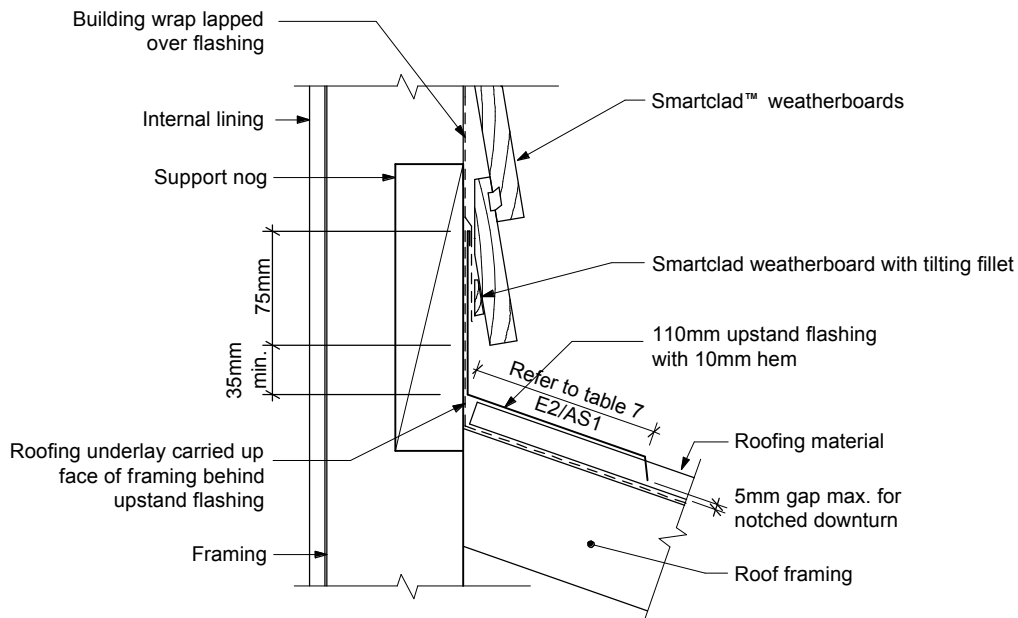


Figure 1.16 Direct fixed - Apron Flashing

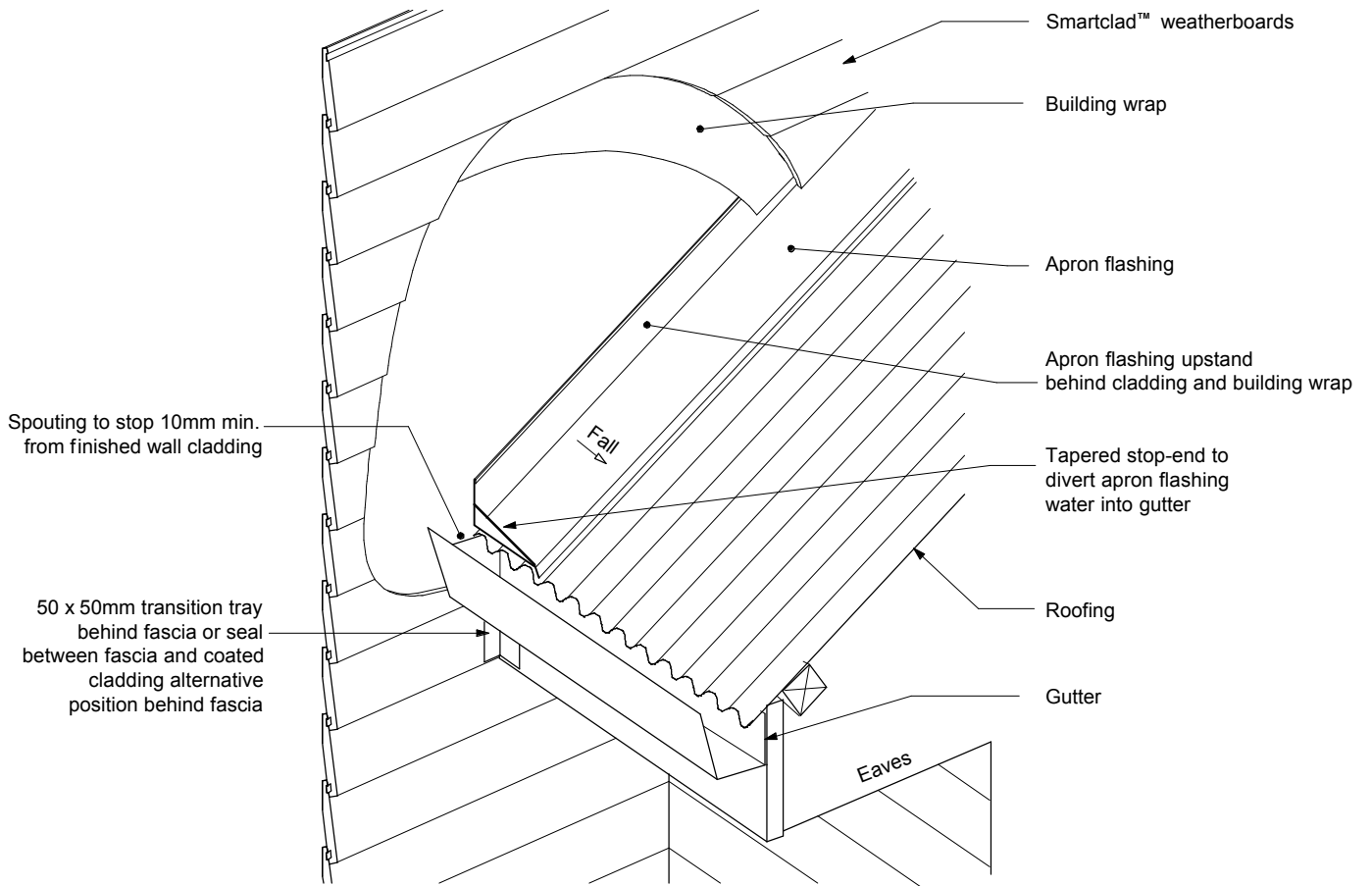


Figure 1.17 Direct fixed - Apron flashing - Stop end

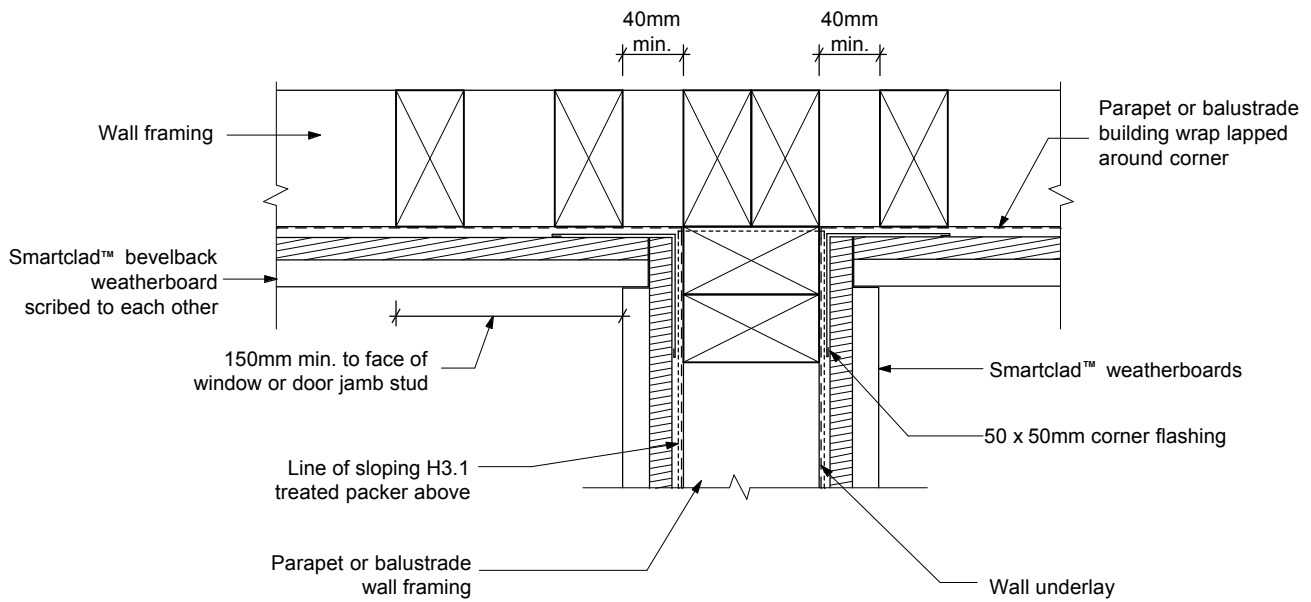


Figure 1.18 Direct fixed - Parapet/Balustrade - Wall junction - Plan View

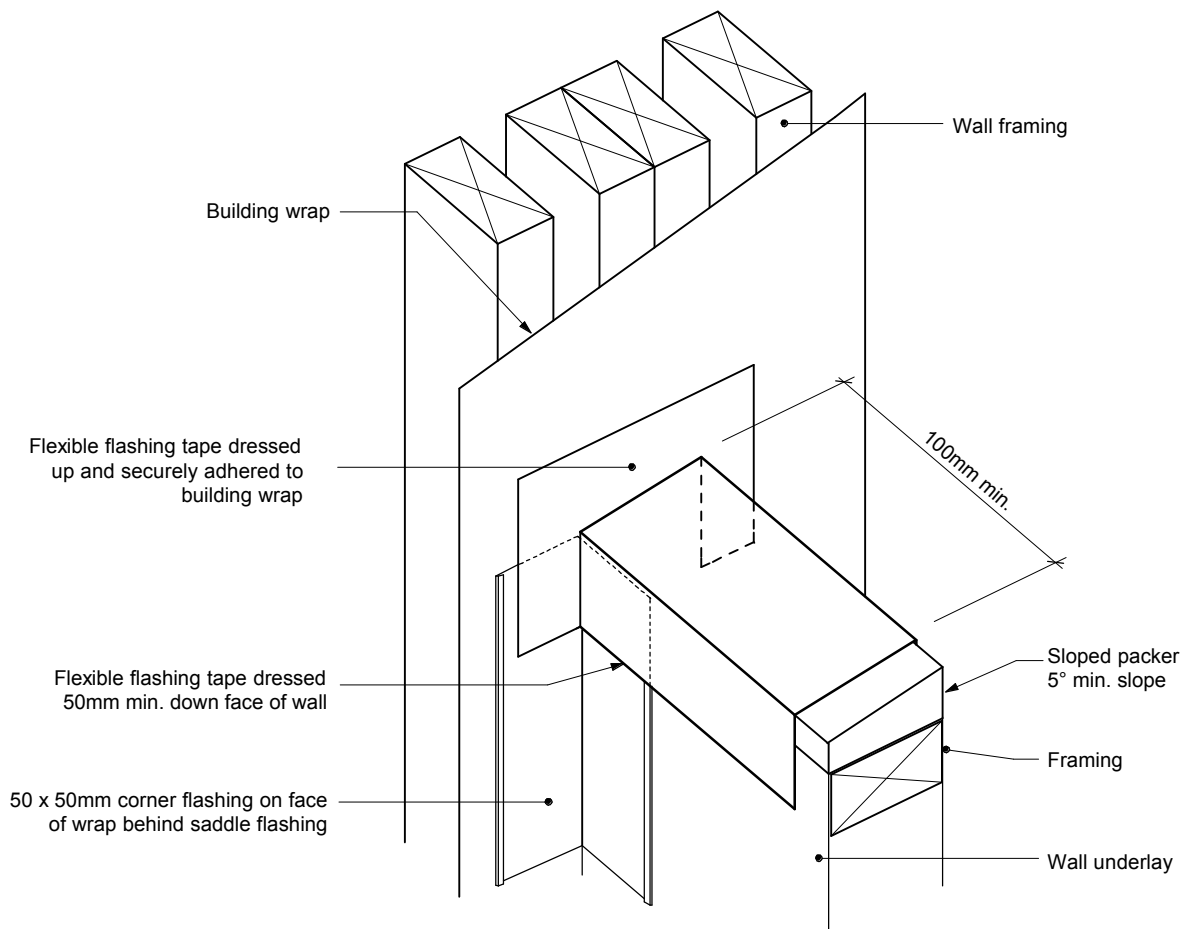


Figure 1.19(a) Direct fixed - Balustrade - Wall junction - Step 1

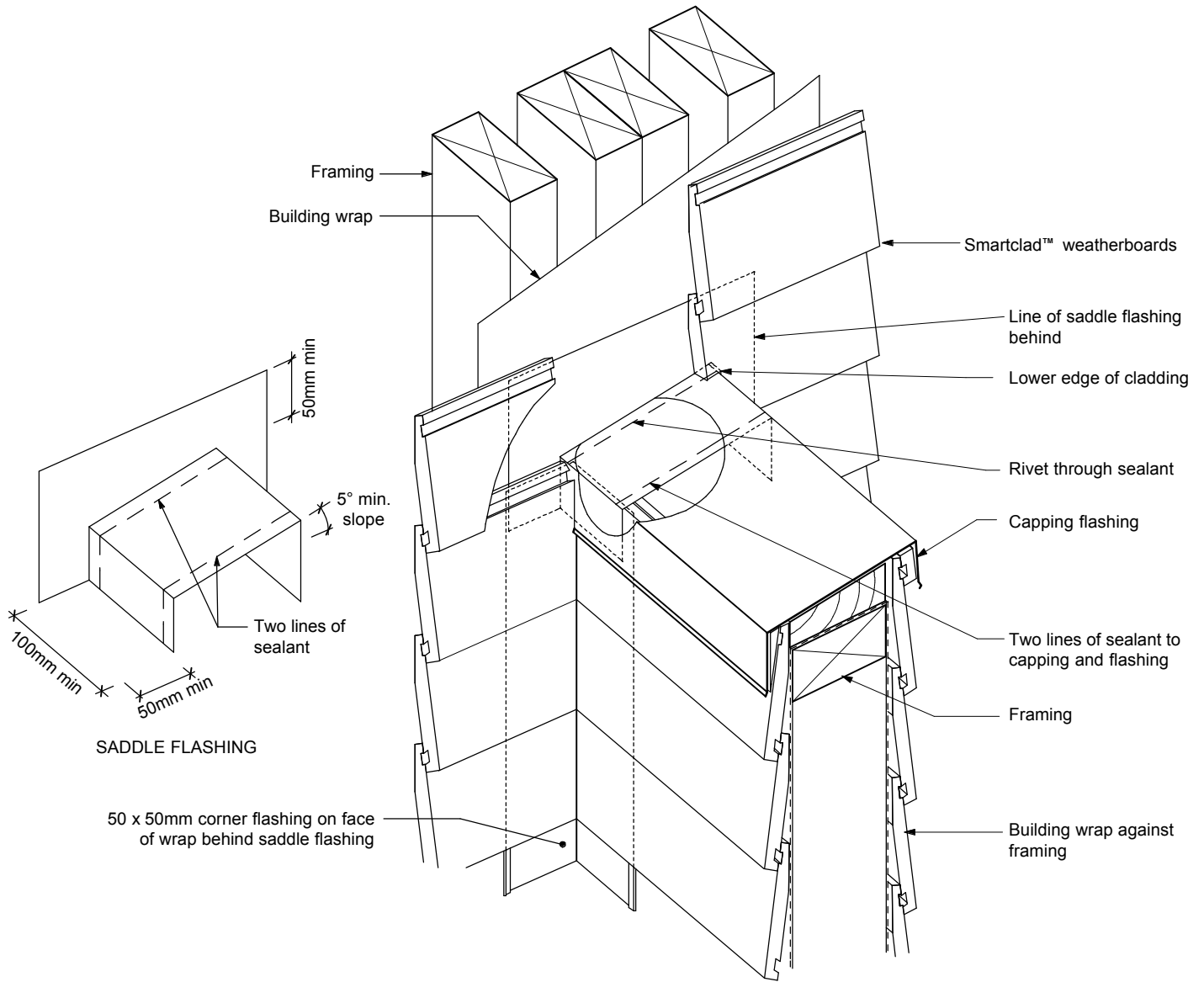
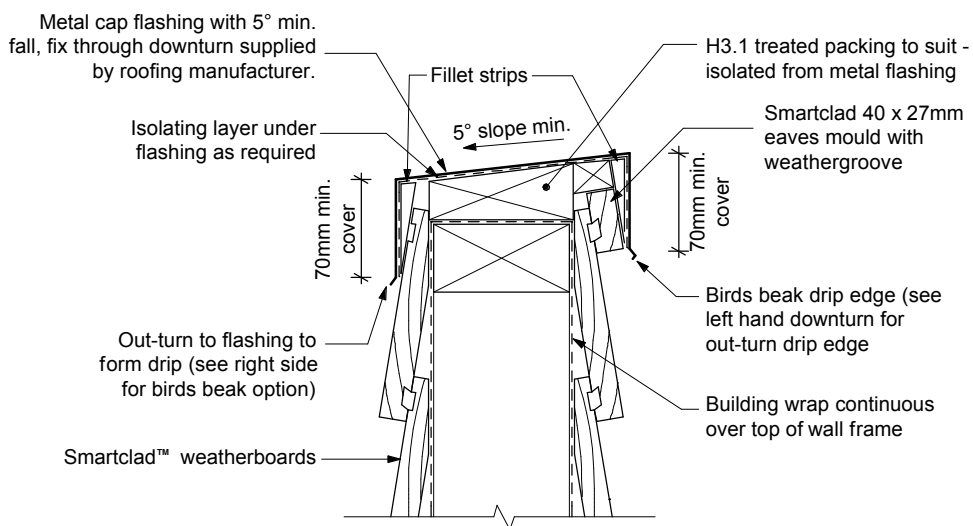


Figure 1.19(b) Direct fixed - Parapet/Balustrade - Saddle install - Step 2



Note : Install flexible flashing tape and saddle flashing at junction with full height wall

Figure 1.20 Direct fixed - Parapet - Cap flashing